



— 2019 —

Growing Guide



Contents



MEET THE GROWERS

Page 3



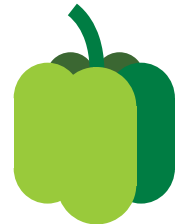
FLOWERS

Pages 4-7



HERBS

Pages 8-10



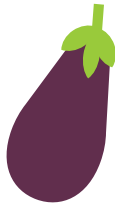
PEPPERS

Page 11



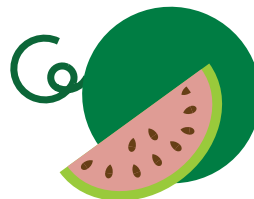
TOMATOES

Pages 12-13



VEGETABLES

Pages 14-16



VINES

Pages 17-18



PERENNIALS

Pages 19-20



Meet the Growers



DULUTH FLOWER FARM

📍 Duluth, Minnesota

Brook and Derek Hoffbauer, owners of Duluth Flower Farm, have been a great local partner in providing fresh-cut, beautiful bouquets and floral arrangements available from early spring to late fall at the Co-op. Look for their MN-Hardy berry perennials and hanging baskets during the transplant sale as well! The Hoffbauers are a family of locavores and encourage others to shop locally. Buying local supports the future of our community, and generational values-driven farms such as DFF.



FAIRHAVEN FARM

📍 Saginaw, Minnesota

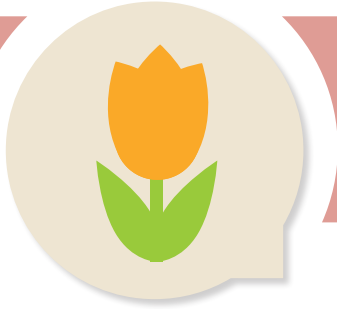
Fairhaven Farm grows a variety of vegetables, herbs and flowers on their rural farmstead located 25 minutes north of Duluth. Alongside their vegetable CSA, farmers Emily and John are honored to be providing the Co-op with a selection of garden bedding plants this year. They focus on heirloom and rare varieties, but also offer fan favorites. Fairhaven Farm employs clean growing practices, meaning they do not use any pesticides, herbicides or other harmful chemicals on their plants. Their plants are also bee-friendly and free from neonicotinoids.



GLACIAL RIDGE GROWERS

📍 Glenwood, Minnesota

At Glacial Ridge, we strive to bring back and restore the genetics of the past to ensure the beauty and diversity of the future. With 36 years in the greenhouse business, Gene and Muriel Stark along with their son, Jeremiah, and his wife, Amie nurture the natives, producing the same handsome and hardy cultivars that have inhabited the prairies for centuries. Our plants are sustainably grown, environmentally friendly. No neonicotinoids and bee and butterfly friendly. MN Department of Agriculture Approved Plant Production



Flowers

ALYSSUM

Sweet

Sweet Alyssum (also known simply as Alyssum), is a low-growing, sprawling plant with dense clusters of sweet-smelling white flowers that provide a lovely scent in your garden all season long. Great planted as borders or in hanging baskets. Flowers are edible once opened. Plants reach about 4" tall. The low-maintenance plants also attract and support beneficial insects. Prefers sun/partial shade and average, well-drained soil. Annual.

CALENDULA (also known as Pot Marigold)

Pacific Beauty Mix

A blend of single and double orange, gold, yellow, and cream-colored flowers. Calendula will bloom early and continue to provide flowers all season long. Well-branched plants with tall, straight stems makes for a great cut flower. Fresh petals are edible and make a lovely addition to salads. Prefers cool conditions. Will reach 12 – 24" tall. Prefers sun/part shade and rich, well-drained soil. Annual.

COLEUS

Rainbow Mix

Vigorous grower with brightly-colored mix of heart-shaped leaves. Ideal for containers and borders. Do not allow to flower, pinch them back as soon as they start to open and pinch back leaves to encourage growth from the main stems for a bushier plant. Avoid over-watering, as coleus can develop root rot and fungus in poorly-drained soil. Can also be kept indoors as a houseplant. Size ranges from 12 – 18" tall. Prefers sun/partial shade and warm, well-drained soil. Annual.

COSMOS (also known as Garden Cosmos)

Sensation Mix

Tall plants with a mix of single flowers, in lavender, pink, magenta, and white. Low-maintenance and will withstand the first mild frosts of fall. Great productive cut flower for bouquets. Blooms are 3 – 4" across, 2 – 5' tall plants. Prefers sun and average soil. Annual.

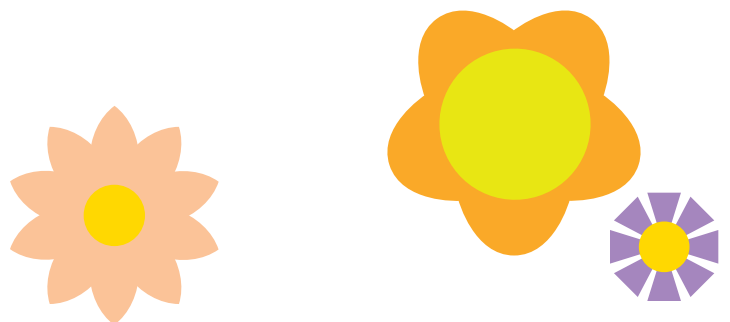
Double Click Mix

Tall plants with large, double and semi-double flowers in carmine, pink, and white. Season-long blooms make for an ideal cut flower. Blooms are 3 – 4" across, 2 – 4' tall plants. Prefers sun and average soil. Annual.

ECHINACEA (also known as Cone Flower)

Common Purple Cone Flower

Vigorous plants with large, purple-petaled flowers that look great in fall bouquets. Also known for medicinal properties. After 3 – 4 years the roots will produce a sizable harvest. Echinacea attracts and supplies a food source for bees and other pollinators. Plants will reach 24. – 36" tall. Prefers sun and warm, well-drained soil. Perennial.



DUSTY MILLER

Silver Dust

This fuzzy-leaved plant provides an interesting texture and contrast for landscaping, container gardens and hanging baskets. The silvery-grey foliage also makes a great filler for bouquets and boutonnieres. The plant requires minimal maintenance once established although it may want a midsummer trim if it becomes leggy. Flowers may be removed to keep the plant compact. 6 – 12” tall. Prefers sun/afternoon shade, and well-drained soil. Will tolerate light frosts. Annual.

GERANIUMS

Maverick Star

The maverick provides that unmistakable, lovely geranium-scent and provides beautiful large blooms throughout the season. The foliage is large, softly lobed and creased, and bright green. Flowers are pinkish-white in color, edged with rose. Perfect for hanging baskets, window boxes or garden beds. Can reach 14 – 16” tall. Prefers sun/partial shade and well-drained soil. Tolerates heat. Annual.

Bullseye Mix

A colorful mix of flowers in cherry, salmon and scarlet contrast well with rich chocolate foliage. Can reach 13 – 14” tall. Perfect for hanging baskets, window boxes or garden beds. Can reach 14 – 16” tall. Prefers sun/partial shade and well-drained soil. Tolerates heat. Annual.

Maverick White

The maverick provides that unmistakable, lovely geranium-scent and provides beautiful large blooms throughout the season. The foliage is large, softly lobed and creased, and bright green. This uniform flowering geranium features multiple stems and large blooms. Perfect for hanging baskets, window boxes or garden beds. Can reach 14 – 16” tall. Prefers sun/partial shade and well-drained soil. Tolerates heat. Annual.

Pinto Premium Violet

These well-branched geraniums are uniform and produce early flowering violet blooms. Perfect for hanging baskets, window boxes or garden beds. Can reach 14-16” tall. Prefers sun/partial shade and well-drained soil. Tolerates heat. Annual.

GERANIUMS *(continued)*

Pinto Deep Red

These well-branched geraniums are uniform and produce early flowering red blooms. Perfect for hanging baskets, window boxes or garden beds. Can reach 14-16” tall. Prefers sun/partial shade and well-drained soil. Tolerates heat. Annual.

Pinto Salmon Splash

These well-branched geraniums are uniform and produce early flowering salmon blooms. Perfect for hanging baskets, window boxes or garden beds. Can reach 14-16” tall. Prefers sun/partial shade and well-drained soil. Tolerates heat. Annual.

IMPATIENS

Athena Mix

Features early flowering, semi-to fully-double, carnation-like blooms on compact, spreading plants. Athena's dense spreading habit and wide color range (pale pink, bright purple, coral, orange, orange flash, red, and red flash) make these impatiens a lovely addition to any garden or hanging basket. Expect to see early blooms then continuous blooms throughout the season. 10 – 12” tall. Prefers partial to deep shade and moist, but well-drained soil. Annual.

LOBELIA

Regetta Sky Blue

These delicate blue flowers are a quintessential addition to any garden. The cascading flowers look stunning spilling out over the sides of hanging baskets, window boxes or other containers. Lobelia also makes a great edge or ground cover in your garden beds. Featuring dark green foliage and beautiful sky-blue flowers that attract butterflies. 28 – 36” tall. Prefers full sun and average, well-drained soil. Annual.

MARIGOLDS

Giant Crackerjack Mix

A popular Giant Marigold (also known as African Marigold, American Marigold and Aztec Marigold) with big double blooms in shades of lemon yellow to deep orange. Strongly-fragrant blooms attract pollinators. Flower petals are edible and are a colorful addition to salads. 10 – 12” tall, 6” wide. Prefers full sun/partial shade and well-drained soil. Annual.

Orange Flame

Features bold color patterns in bronze-red and bright orange that resemble flames (hence the name) on double blooms. This low growing, compact French Marigold variety is distinctly-fragrant and makes a great ornamental plant. Fun fact: French Marigolds are not actually French, but a member of the daisy family and native to the Americas. Commonly used as a companion plant for many vegetable plants because they are said to repel harmful insects. Warning: Not all French Marigolds are edible. 10 – 12” tall. Prefers full sun and average, well-drained soil. Annual.

Petite Mix

A dwarf mixture of brightly-colored, crested French Marigolds. Very easy to grow in containers or garden beds. Warning: Not all French Marigolds are edible. 10 – 12” tall. Prefers full sun and average, well-drained soil. Annual.

NASTURTIUM (also known as Garden Nasturtium and Indian Cress)

Kaleidoscope Mix

Great for adding a patch of vibrant color to garden beds or container gardens. The Kaleidoscope mix features a variety of colors ranging from dark orange to yellow-orange and also includes some swirled bi-colored blooms. The flowers and foliage are edible. They have a spicy, peppery flavor and are great for adding color to a salad mix or flavoring butter or cream cheese. Plant height varies. Prefers full sun/partial shade and average (not high in nitrogen), well-drained soil. Annual.

Alaska Mix

This stunning variety features green and white variegated foliage and brilliant blooms in yellow, orange, crimson-red, salmon, and cherry. The flowers and foliage are edible. They have a spicy, peppery flavor and are great for adding color to a salad mix or flavoring butter or cream cheese. Plant height varies. Prefers full sun/partial shade and average (not high in nitrogen), well-drained soil. Annual.

PANSIES (also known as Johnny-Jump-Ups, European Field Pansy, Hybrid Violet, Heart's Ease)

Majestic Giants

Features 3 – 4” blooms in a variety of colors. Edible flowers make a great garnish for salads or desserts. Deadhead for continuous blooms. 6 – 8” tall. Prefers sun/partial shade and rich, cool, well-drained soil. Annual.

Historic Pansies

Heirloom mixture of multi-colored blossoms. Great for containers or for ornamental border plantings in garden beds. 6 – 8” tall. Prefers sun/partial shade and rich, cool, well-drained soil. Self-seeding Biennial.

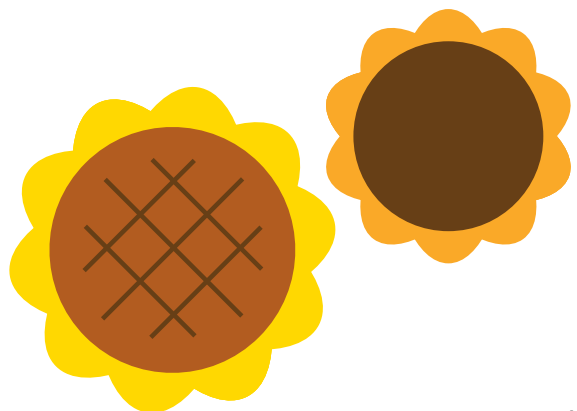
PETUNIAS

Balcony Mix

This heirloom petunia was popular in the early twentieth century but has been nearly lost to cultivation due to interest in modern varieties. These lovely, fragrant blooms come in a range of colors from rose to lavender to purple. The trailing plants are great for hanging baskets, window boxes and container gardens. Fertilize your plants monthly to ensure good growth and remove faded/dead flowers to prolong blooming. 6 – 10” tall. Heat tolerant. Prefers sun/partial shade and rich, well-drained soil. Annual.

Double Glorious Mix

A vibrant mixture of veined, fully-double blooms. Remove faded/dead flowers to prolong blooming and give a bi-weekly dose of fertilizer to encourage blooms. 8 – 12” tall. Heat tolerant. Prefers sun/partial shade and rich, well-drained soil. Annual.



SNAPDRAGONS

Rocket Mix

This “all-season” mix includes shades of rose, cherry, pink, orchid, red, golden-yellow, lemon-yellow, and white. Resistant to heat, tall, multiple spikes, strong and consistent, dead-head for more blooms. It is a great cut flower and looks lovely in bouquets. The flowers are edible and can be used for a colorful garnish in salads, desserts, and drinks. However, their flavor is slightly bitter and floral, so use sparingly. Survives light frost in the fall. 30 – 36” tall. Prefers sun/partial shade and rich, well-drained, moist soil with neutral pH. Annual.

Costa Mix

Early mix for spring and summer production. This mix may include rose, silver (very light pink), white, velvet (burgundy), and apricot. A great cut flower, known for exceptionally strong stems, high yield, and uniformity. The flowers are edible and can be used for a colorful garnish in salads, desserts, and drinks. However, their flavor is slightly bitter and floral, so use sparingly. 30 – 36” tall. Prefers sun/partial shade and rich, well-drained, moist soil with neutral pH. Annual.

SUNFLOWER

Autumn Beauty *(also known as common sunflower or annual sunflower)*

Vibrant and striking bright yellow, bronze, and maroon flowers with some bi-colors. Excellent source of pollen for bee forage. Leave them to dry in the fall to provide food for the birds. Flowers are edible with a bittersweet taste. Buds can be fried, and the petals can be used as a garnish in salads and desserts. Multi-branching producing many long stems, 5’ tall. Flowers measure up to 8” across. Prefers sun and average, well-drained soil. Annual.

VIOLAS *(also known as Johnny-Jump-Ups, Pansy and European Field Pansy, Hybrid Violet, Heart’s Ease)*

Helen Mount / Johnny-Jump-Up

Delicately fragrant flowers are edible and make delightful garnishes. Very winter hardy and eager to self-sow in the shade of summer plants, Violas are cheerful surprises in the cool months. Johnny-Jump Up is tri-colored in bright purple, yellow and white. Deadhead for continuous blooms. 4 – 6” tall. Prefers sun/partial shade and rich, cool, well-drained soil. Perennial.

Penny All-Season Mix

A mixture of blue, deep-blue, orange, yellow, and yellow-frost. The Penny series boasts the vigor growers have now come to expect from hybrid Violas. Larger than normal blooms over lush green, compact foliage. Deadhead for continuous blooms all season long. Flowers are edible and have a mild wintergreen flavor. 6 – 8” tall. Prefers sun/partial shade and rich, cool, well-drained soil. Annual.

ZINNIA

County Fair Blend

Old Fashioned variety with huge double and single blooms. Features a warm-toned mix of pink, orange, purple, gold, and cream blooms. With long stems, it’s an excellent cut flower that will produce blooms all season long. The more you cut the more blooms you’ll see. Heat and disease tolerant. Attracts butterflies. Bouquets will last longer if you change the water in the vase every two days and keep out of direct sunlight. 24 – 36” tall. Prefers full sun and rich, well-drained soil. Annual.





Herbs

BASIL

Genovese

68 days

Strong, dark green glossy leaves make the perfect pesto! Very tender leaves also make for great fresh use. A must have for any kitchen herb gardener.

Tulsi

75 days

Heavenly scent. An Herb from India with many medicinal properties. The dried leaves make a great tea, and the flowers attract many beneficial insects. Very easy to collect seed for future plantings.

Thai

63 days

Exotic clove-licorice flavor perfect for Thai cooking. Flavor curries with fresh leaves, infuse when steaming rice, or add to stock for a well-rounded flavor.

Greek

55 days

This uniformly round bush-type basil plant produces miniature leaves that are great for garnish, salads, dressings, and are just plain fun to see and smell! Look for this herb in 4-packs as well as small pots. Compact plant that is great for containers.

Italian Large Leaf

78 days

Heavy producer with leaves up to 4 inches long. Great for pesto and Italian cooking!

BORAGE

Borage

A great addition to a pollinator habitat planting. They're attracted to the beautiful blue flowers that produce over the summer. Edible blooms make for a beautiful garnish on a summer salad.

CHIVES

Chives

63 days

Quick growing and produces a medium-heavy chive. Great for drying or freezing. Adds sweetened onion flavor to mashed potatoes or a leek and potato soup.

Garlic Chives

63 days

Similar to chives with a delicate garlic flavor. Ornamental flowers are long lasting and bloom once well established.

CHAMOMILE

German

70 days

Tastes delicious in a fresh salad and makes a comforting tea that's great before bed. Will self-seed annually and will easily establish itself in your garden for years to come.

CILANTRO

Santo

55 days leaf, 95 seed

Excellent variety for adding to South American dishes and will yield seed for drying into coriander. A great fast growing herb for within arm's reach of the kitchen.

DILL

Bouquet

55 days leaf, 95 seed

Versatile dill used for both fresh leaf and fresh or dried seed/flower. An essential ingredient for great fall pickles.

Green Sleeves

45 days

A faster growing variety suitable for containers. A great addition for fresh dill added to fish dishes or served with cheese and crackers.

FENNEL

Florence

80 days

Sweetly flavored bulb will develop which is great shredded into a salad or halved and roasted. The leaves can also be used fresh in salads or soups and the seeds can be dried to flavor sausage.

LAVENDER

Mustard Type

100-110 days

Compact English lavender. Wonderfully fresh scent and flowers that range from a deep purple to a soft white. Hardy in zone 5-8, but in our Northern area it is best to mulch and plant in a south-facing location to increase chances of survival.

LEMON BALM

Lemon Balm

70 days

Strongly lemon-flavored leaves. Used in teas and also sparingly in salads. Mulch in the fall to increase chances of overwintering.

LOVAGE

Lovage

90 days

A unique and very hardy perennial herb. Tastes like celery and is quick to sprout in the spring making it wonderful for early season soups and salads. Can grow up to five feet tall when well established and rooted in loose rich soil.

MINT

Spearmint

70-80 days

A versatile and common mint used for flavoring iced teas and salads, and serves as a garnish in creamy desserts. A perennial that will easily establish to your garden. Plant in containers to avoid taking over the garden or establish a mint patch.

OREGANO

Greek Oregano

80-90 days

Essential herb for Italian and Greek cooking. Dark green leaves and white flowers with a strong aroma and flavor. A hardy perennial that is great fresh or dried.

PARSLEY

Curly

75 days

Indispensable herb and staple ingredient in soups, stocks, sauces, and salads. The curly leaves are lofty when minced. Multiple cuttings can be taken all season long.

Giant Italian Flat Leaf

75 days

Similar flavor but a flat texture makes flat leaf parsley virtually the same as curly. However, this variety is much larger as the name implies.

ROSEMARY

Rosemary

80-100 days

Pine scented, savory, culinary favorite. Can be grown in containers or in a pot and brought inside over winter. Native to the Mediterranean, rosemary can be used to flavor countless dishes.

SAGE

Fanni

80-90 days

A staple of the herb garden. Savory with a high oil content, sage will yield different results when used fresh or dry. Try infusing several fresh leaves into a white-wine sauce over a mushroom fettuccine. In dried form, it can be used to flavor a variety of soups and sauces.

SISHO

Britton

An herb native to Japan and often used in sushi and fresh salads. Has a mild mint/basil aroma and contrasting red and green leaves.

THYME

Thyme

90 days

One of the most versatile herbs, thyme can be used to flavor almost any meat or vegetable dish. Fresh or dried thyme brings an earthy, savory flavor to your dish.





Peppers

BELL PEPPERS

King of the North

60 days green, 72 red

Standard bell pepper suitable for northern climates. Plant early and, if possible, under plastic or in a greenhouse for increased chances of turning red. Strong stout plants.

SWEET PEPPERS

Fehér Ozon

65 days white, 95 red

A Hungarian sweet pepper that ripens from white to orange and finally to a crimson red. Can be picked at any stage and varies from mild and tangy to sweet. Traditionally used for drying to make paprika.

Chervena Chushka

60 days green, 80 red

A Carmen type sweet pepper. Used for frying or roasting for a deliciously complex flavor.

SOUTHWESTERN

Ancho Poblano

68 days green, 85 red

Mild chili traditionally used for stuffing or roasting. Can be harvested when fully ripened and dried to create Ancho seasoning.

NuMex Joe E. Parker

70 days green, 95 red

A southwestern Anaheim type pepper that yields 8" peppers with mild heat and excellent flavor.

HOT PEPPERS

Early Jalapeño

65 days green, 85 red

Works well in containers, a sturdy plant that produces prolific spicy fruits. Earlier than most standard jalapeño varieties.

Red Rocket

45 days green, 60 red

A great cayenne pepper from Johnny's Select seeds. Dependable and easy to grow. Will produce medium sized, thin-walled hot peppers great for drying.

Hungarian Hot Wax

59 days yellow, 84 red

A fan favorite! Medium heat waxy pepper great for frying or pickling. Heat grows as peppers mature from yellow to red. Very productive.

Red Rocket

45 days green, 60 red

A very unique cayenne pepper that grows over a foot long! Great for drying and for adding fresh to recipes for extra heat and flavor. Prolific plants that produce over a relatively long window.

Magnum Habanero

100 days

1-2" fruits with orange habanero bonnet shape. Tolerant of cool conditions and shorter seasons. Currently the hottest pepper we offer.

Ring-O-Fire

60 days

Cayenne type pepper that is easy to grow and with generous yields. Great for drying or eating fresh.

Lyons Red

65 days

Medium sized Anaheim-type pepper that turns from green to red. This is a fun variety unique to Fairhaven Farm. We acquired the seeds from a farmer in Lyons Colorado and now grow these on our farm. Great for grilling, stuffing, or drying.



Tomatoes

CHERRY TOMATOES

Sweetie**

65 days

Super sweet cherry tomato with high sugar content, great for eating right off the vine! Great vigor and reliability with masses of 1.5" round cherries in long clusters.

Sungold**

57 days

A best seller and wonderful cherry tomato! A tendency to split makes this a perfect home-garden variety and yields a wonderfully sweet bright orange flavor that cannot be found outside the garden.

Black Cherry**

64 days

Fruits almost black in color with a very deep satisfying flavor. High yielding plants will produce large amount of round fruits.

Principe Borghese*

70-75 days

A hard to find heirloom that produces tons of 1-2-ounce fruits. Great for drying. Plants may need support due to heavy yields.

Peacevine **

78 days

Prolific 1" red fruits set on indeterminate vines. Resists cracking and taste great!

Gold Nugget*

60 days

Can compete with Sungold in outstanding bright flavor. Yellow fruits on compact plants that mature early.

Bing**

65 days

Great flavor and a variety bred by High Mowing, our favorite seed supplier. Harvest frequently in wet weather as it prefers hot and dry conditions.

SLICERS

Brandy wine**

82 days

A well-loved heirloom that produces big-beautiful fruits with a luxurious flavor that cannot be beat! Pick just before ripened to avoid cracking. Makes the best tomato, cucumber, and mayo sandwiches!

Italian Heirloom**

70-80 days

Outstanding variety from Italy with full tomato flavor. Excellent yields and ideal for slicing and canning given its meaty interior.

Prudens Purple**

72 Days

These heirloom plants have potato shaped leaves and produce large 1lb tomatoes that rival a Brandywine for taste and texture.

German Johnson**

75 days

A deep pink beefsteak type tomato with excellent and complex flavor. Relatively early producer for such large fruits.

German Pink**

85 days

A wonderful variety that resists cracking and has a meaty, fleshy interior with few seeds. One of the first varieties to be offered by Seed Savers Exchange in Decorah, Iowa. Great all around tomato that can be used for slicing, canning, and freezing.

* **DETERMINATE:** (bush) varieties do not need pruning and may be grown with or without support; fruit ripens within a concentrated time period.

** **INDETERMINATE:** (climbing) varieties should be staked, trellised, or caged, and pruned for best results; fruit ripens over an extended period.

MID-SIZE

Jaune Flamme**

75 days

Prolific French heirloom with a sweet fruity flavor. A great salad tomato and can also be used for saucing and drying.

Pink Boar**

75 days

A beautiful wine-colored tomato with dark green stripes. Sturdy fruit great for fresh eating and a treat for the eyes as well!

Speckled Roman**

80-90 days

A unique heirloom that comes to a point with red flesh and orange stripes. Great gourmet variety with meaty texture and excellent flavor.

Moskvich*

60 days

High-quality midsize tomato that tolerates cool temperatures. Their high resistance to cracking makes them great grown under cover or in the open.

Green Zebra**

75-80 days

These medium sized green-when-ripe fruits start out pale green with dark stripes that soften and turn slightly yellow as they mature. They have a very distinct flavor that is zingy and sweet! A very unique selection.

Cosmonaut Volkov*

68 days

This variety is one of the tastiest selections we offer. They produce large slightly flattened fruits that are a crimson red with slightly green shoulders. Originally from the Ukraine they yield even in cool conditions. Harvest just before ripe to avoid cracking.

Mountain Princess*

68 days

Perfectly rounded fruits bare on very productive vines and have a mild flavor. Great for short cool seasons.

Black Krim**

80 days

A very unique variety that produces deep brown/red fruits that have a smoky flavor and nice texture. High yielding plants.

PASTE

San Marzano**

80 days

Classic Italian paste tomato. Easy to remove skin and excellent flavor makes this a perfect tomato for sauces and paste.

Amish Paste**

76 days

Reliable tomato with meaty, juicy interior. Great dual-purpose tomato, big and flavorful enough for slicing, and few seeds making it ideal for processing.

Roma*

65 days

Productive plum tomato with thick-walled fruits and mild flavor. Great for processing. Expect heavy yields on stout plants.

Bellstar*

65 days

A dwarf variety perfect for cold climates and concentrated harvests. Good for processing and can be grow happily in containers.

Paisano (FI)*

68 days

This is a high-yielding San Marzano-type tomato. Thick walls and high solid percentage make this great for sauces and canning. This is also a hybrid tomato which gives it many resistances to disease and blight but the seeds will not be true-to-type if saved and planted again.

Blue Beech**

82 days

A high-yielding paste tomato which produces large elongated fruits that are perfect for canning and processing.

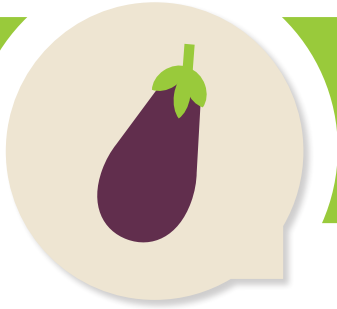
Juliet (FI)**

60 days

This hybrid tomato is great for fresh eating and pasta sauce, as well as canning and processing. Consistent yields can be expected on highly disease resistant plants.

* **DETERMINATE:** (bush) varieties do not need pruning and may be grown with or without support; fruit ripens within a concentrated time period.

** **INDETERMINATE:** (climbing) varieties should be staked, trellised, or caged, and pruned for best results; fruit ripens over an extended period.



Vegetables

BROCCOLI

Waltham 29

80-85 days

Great spring broccoli that produces a 5-6" head on longer stalks. Compact plants produce ample side shoots great for bunches of smaller heads.

Goliath

75 days

Potential to grow into a massive head. A unique variety from Baker Creek Seeds. Will produce some side shoots after main head is harvested. Great home garden variety.

De Cicco

48 Days

A wonderful multi-cut variety that produces a small 3-4" central head and tons of side shoots. This variety matures early and yields bunches of broccoli up to four weeks!

BRUSSEL SPROUT

Long Island

100 Days

Open-pollinated variety dating back to the nineteenth century. Expect heavy yields if planted in rich soil and full sun.

CABBAGE

Golden Acre

62 days

Compact variety that is relatively early. Great for dense plantings, though it is more suitable for a spring planting as the harvest window is short.

Red Express

62 days

Compact habit with smaller heads that size up quickly for a spring treat. Can be planted at 8 inch spacing and expect a 2-4lb head.

Copenhagen

65 days

Heirloom Dutch variety that yields medium sized heads that are ideal for the home garden.

CAULIFLOWER

Snowball

70 days

Old American standard with ivory, self-blanching head and green stems. A reliable cauliflower from Baker Creek Seeds.

CELERY

Tall Utah

100 days

This celery takes a long time to fully mature but arms can be broken off the main plant sparingly and used as soon as the plant is established. Home grown celery is the best!

CHARD

Ruby Red

60 days

Standard chard variety with bright crimson stems and green leaves. Chard is a great plant that will produce nutritious greens over the entire season. It will even over-winter is properly protected.

Rainbow Blend

60 days

A mix of reds, yellows, oranges, and pinks make this mix of chard a beautiful addition to your garden!

COLLARDS

Champion

70 days

A reliable producer of plentiful nutritious leaves. Compact variety is great for the home garden.

CORN (SWEET)

Who gets kissed?

78-84 days

This variety was developed in conjunction with Martin Diffley, a very famous Minnesotan vegetable grower who founded Gardens of Egan near Minneapolis. Bi-color kernels on a 5-6' plant. Plant in rich soil, fertilize regularly, and place in full sun for best results in our challenging climate.

CORN (FLINT)

Painted Mountain

90 days

A multi-colored corn with extreme cold-hardiness meant for milling for corn flour. Although beautiful and decorative, this corn will yield excellent starchy-kernels and makes for great corn flour.

Roy's Calais Flint

90-95 days

A corn by way of Vermont and originally from the Abenaki people of the Northeast and Quebec. Great for cornmeal, four, and hominy.

EGGPLANT

Black Beauty

65 days

Classic Italian eggplant yielding large bell-shaped purple fruits. A compact variety will benefit from staking to help maintain upright structure with large fruits.

Ping Tung Long

65 days

Japanese variety with long slender purple fruits. More tender than the Italian varieties and very productive.

KALE

Kale Mix

50 days

A mix of three different varieties: Red Russian with purple stems and great fan-like leaves. Dwarf Green Curled, a compact variety with deeply curled and very tender leaves. And Dazzling Blue, a Lacinato type kale with leaves and stems that range from deep green to purple. All are extremely cold tolerant and will yield nutritious leaves all season long!

KOHLRABI

Purple Vienna

53 days

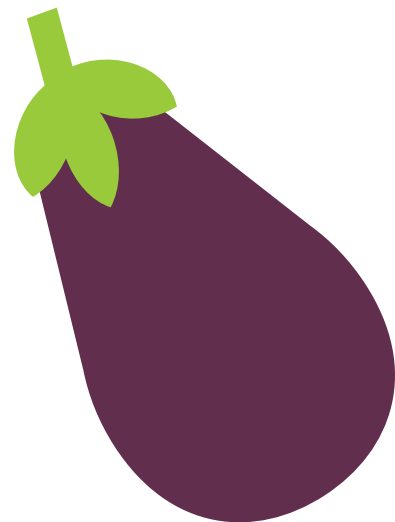
An old-world variety dating back to 1860. Very cold tolerant with purple flesh and crunchy white interior.

LEEK

Alto

75-85 days

Versatile summer leek that can be harvested before fully mature for a very tender delicious leek. Not winter hardy.



GREENS

Tat Soi

45 days

Fast growing spoon-shaped leaves are dark green and glossy with narrow white stems. Very tender early green great for the season's first salad or stir-fry!

Shanghi Green Pac Choy

45 days

A mini Pac Choy, can be planted closely for dense miniature heads. Great flavor and texture.

Endive (Frisse)

60 days

A frizzy endive with frayed leaves and tender white interior. Greens are slightly bitter but are wonderful with radish in a spring salad.

Lettuce Mix

40-45 days

A mixture of different lettuces from Seed Savers in Decorah, Iowa. A variety of colors and textures sure to please.

Acadia (Spinach)

45 days

Slow to bolt makes this a good spring variety. When planting as a transplant wait until the plant becomes large, then harvest the entire plant using the stems and leaves in a salad.

Matador (Spinach)

43 days

A large variety with high-yield potential. A very cold tolerant spinach means that early spring salads are waiting!

ONIONS

Dakota Tears

112 days

Medium sized bulbs are great for storage. Wait until the tops tip over, uproot the plant and allow to field-dry for several days then move to a warm location with good air circulation to finish the curing process.

Rosa di Milano

110 days

A great fresh red onion. Will store but for a shorter time than Dakota Tears. Good raw in salads and on tacos!

Evergreen Hardy

65 days

Green onion that is great for fresh eating or lightly cooked. Can over-winter if properly protected and will grow into a dense patch if allowed.

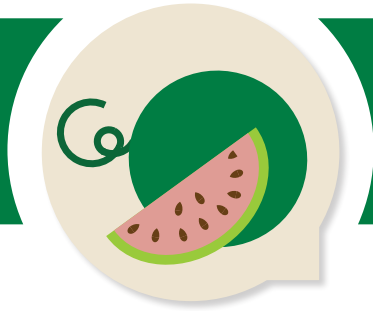
TOMATILLO

Toma Verde

60 days

Very early variety with a tart flavor that sweetens over time. Ready to harvest after the husk splits and the fruit color changes from a yellow green to medium green.





Vines

CUCUMBER

Max Pack

55 days

A vigorous vine that produces ideal pickling cucumbers. Average fruit is 4 inches long with a small seed cavity.

Marketmore 76

58 days

Standard slicing cucumber in the North. 8-9-inch fruits are easily harvested if the vine is trellised. Takes a little longer for plant to bear fruit but has a very long harvest window.

PUMPKIN

Howden

115 days

Produces a great Jack-O-Lantern with rich orange color and sturdy handles. Very reliable variety and fun to watch grow!

Jack Straw

100 days

Great Jack-o-lantern pumpkin with 14-16lb fruit and plenty of space to carve a spooky face!

Kakai Hulless

100 days

A Japanese pumpkin bred mainly for its hullless edible seeds. 2-3 medium sized fruits per plant.

SUMMER SQUASH

Black Beauty

50 days

A great standard zucchini, deep green color. Expect abundant yields of uniform fruit all season long!

Golden Zucchini

50 days

Much like it's green counterpart but a vibrant yellow. When grown together they make for a wonderful contrast eaten raw or cooked.

WINTER SQUASH

Delicata

80 days

A northland favorite! This compact variety produces 1.5-2lb fruits that ripen from a creamy white with green streaks to a buttery yellow. Will hold for some time in the root cellar and is great split in half and baked with butter and fresh herbs.

Spaghetti

88 days

Oblong, medium sized fruits have very sweet flesh. Bake or boil and the flesh will separate into long noodle-like threads. Top with some sauce and you're in business.

Table Queen (Acorn)

92 days

Good yields and very popular variety. Dark green fruits are ribbed and shaped like an acorn. Can withstand below average soil conditions and still yield fruit.

Sweet Reba (Acorn)

90 days

This variety has good disease resistance and produced heavy yields of acorn style squash. It has a semi-bush habit which means it will vine but will be more compact in size.

Waltham (Butternut)

105 days

Great keeper if properly stored. The tan skin peels easily and the bright yellow-orange flesh is great in soups or roasted.

Baby Blue (Hubbard)

95 days

Tear-drop shaped fruit is smaller than the usual Hubbard squash making it easier to grow and store. Very sweet flesh and blue-grey skin.

Burgess (Buttercup)

95 days

Prolific plant with up to 10-12 fruits per plant. Very long vines can develop with 3-5lb flattened-teardrop fruits. A New-England favorite.

Red Kuri (Kabocha)

95 days

Reliable short-season Japanese squash, red-orange in color and 3-4lb fruits. Makes divine roasted squash with a wonderfully rich flavor and consistency.

MELONS

Pride of Wisconsin

90-100 days

A great heirloom variety introduced in 1937 in Wisconsin. Football shaped 4-8lb muskmelons develop with striking orange and sweet interior.

Amish

80-90 days

Produces a good crop under most conditions. 9" long fruits and weigh 4-7lbs. Delicious orange flesh and thick rind make this muskmelon a wonderful addition to the garden.

Noir Des Carmes

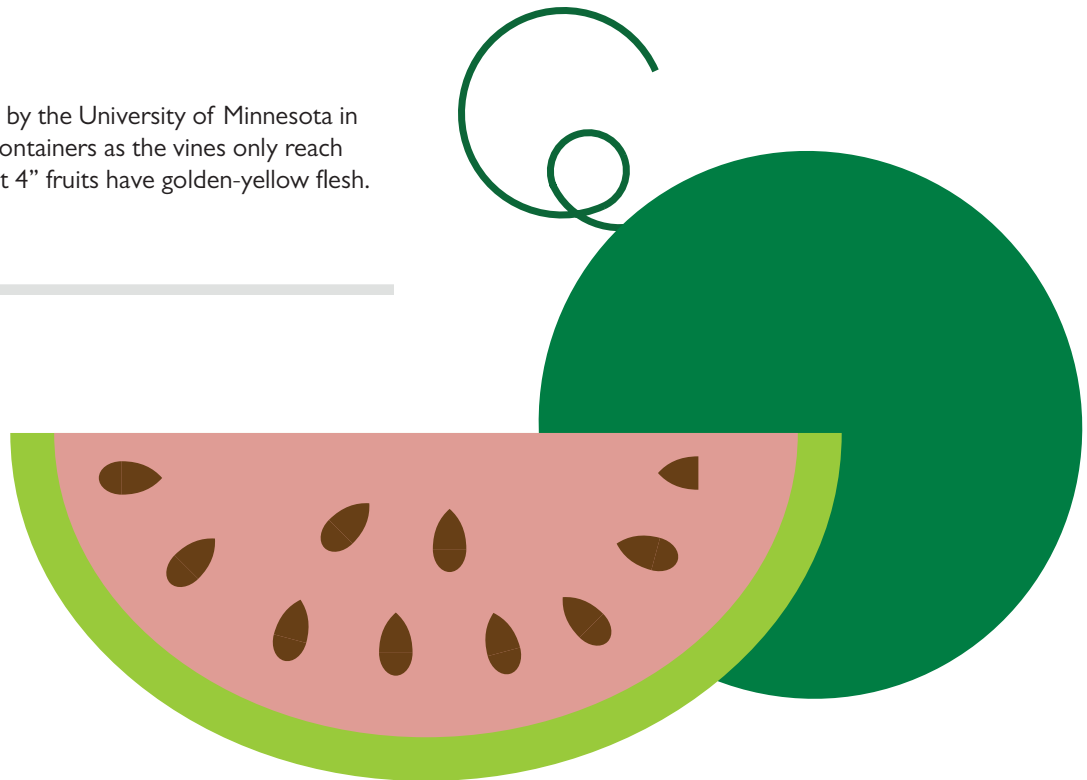
75 days

A French cantaloupe that is easy to grow. Ripens from a black-green skin to a orange with splashes of green. Careful to pick when ripe as they will split.

Minnesota Midget

60-75 days

Extra-early variety bred by the University of Minnesota in 1948. Can be grown in containers as the vines only reach about 3' long. Very sweet 4" fruits have golden-yellow flesh.





Perennials

NATIVE WILDFLOWERS

Columbine

Red with yellow, long spurs. Height: 1-3'. Bloom in April, May, and June and likes normal to dry soil conditions. Shade.

NATIVE POLLINATOR MIXES

Bee Mix

Mix includes: (*common names*) anise hyssop, wild blue indigo, vanilla scented clematis, prairie smoke, foxglove beard tongue, and wild petunia.

Butterfly Mix

Mix includes: (*common names*) pale purple coneflower, button blazing star, meadow blazing star, prairie blazing star, orange cone flower, and *wild lupine.

*Wild lupine is the only plant that Karner blue butterflies lay eggs on. Karner's are an endangered subspecies of small blue butterfly.

Hummingbird Mix

Mix includes: (*common names*) giant purple hisop, wild columbine, firefly coral bells, lobiela red cardinal flower, blue lobiela, panorama red monarda.

Monarch Mix

Mix includes all milkweed: (*common names*) swamp milkweed, showy milkweed, common milkweed, butterfly weed, and whorled milkweed.

HIGH CLIMBER PERENNIALS

Clematis Integrifolia

Medium-green, 5-inch-long, ovate leaves feature deep veining that provides an interesting texture; each very slender stalk is topped by a single, nodding, blue flower, often with sepals that appear to twist and curl; showy, silvery, feathered seed heads follow bloom and last through late fall. Best in sun.

Clematis Tangutica, Radar Love

During summer and autumn, the plant is covered with canary yellow nodding lanterns that are 8 to 10cm (3 to 4in) wide. In the autumn the flowers turn into beautiful, large tufts of long silvery, silky seed heads. Flowering only three months after sowing, it is very easy to grow. It can be planted in a hanging basket then transplanted in the ground in the autumn, or can be used as a ground cover.

GREENERY

Sprengeri, Asparagus Fern

Arching fronds of fresh green, needlelike foliage all season. This fern will create a dense, fluffy look in containers.

Sweet Potato Vine, Blackie

Cascading foliage; stunning dark purple - almost black. Use in hanging baskets, beds, borders, and window boxes.

Sweet Potato Vine, Bullfrog

Has a compact growing habit and is excellent for small containers, with the advantage being in mixed containers since they will not overtake other plant material.

Sweet Potato Vine, Marguerite

Vigorous, trailing, mounded growth with vibrant chartreuse foliage. Use in hanging baskets, beds, borders, and window boxes.

GRAPES

Frontenac Gris

Blush color; white wines. Frontenac is an inter-specific hybrid grapevine that is a result of research and cross-breeding by the University of Minnesota. It was grown from a crossing of the complex, interspecific hybrid Landot 4511 and a very cold hardy selection of *Vitis riparia*. It was released in 1996.

Marquette

Purple color; red wines. Marquette is an inter-specific hybrid red wine grape variety. It was developed at the University of Minnesota, and is a cross between two other hybrids, MN 1094 and Ravat 262. Marquette was introduced in 2006.

BLUEBERRIES

Chippewa

Chippewa blueberries bear large fruits on a compact plant with exceptional cold-hardiness. Plant two or more cultivars to ensure successful pollination and fruit set.

Superior

Medium, sweet-tart berries ripen in late season. Superior matures the majority of its fruit about 1 week later in the season than other blueberry varieties that can be grown in Zones 3 and 4 and also because of its exceptional productivity in cold climates.

Blueberry plants will start to bear a few berries 2 to 3 years after planting. You'll get a larger harvest after 5 years. Plant no closer than 4ft. apart. They prefer acidic soil.

Source: <https://www.extension.umn.edu/garden/yard-garden/fruit/blueberries-for-home-landscapes/>



STRAWBERRIES

Evie-2

An ever bearing plant that continually produces strawberries throughout the season. This day-neutral strawberry variety has a large firm berry with good flavor that also has good freezing quality. Plant bears fruit 12-14 weeks after planting.

