

# GARBANZO GAZETTE

Whole Foods Community Co-op, Inc.

Duluth, Minnesota

March/April 2003



WFC welcomes Produce Assistant **Peter Hemberger**, Deli Assistants **Pat O'Brien** and **Mary**

**Jeanetta**, and returning Clerk **Matt Abel**.

WFC members who have not already attended a **Member Focus Group Dinner** are encouraged to enter the drawing for invitations to the next dinner at India Palace Restaurant. The drawing will be held March 3. Drawing winners will receive a mailed invitation to the April 10 dinner (5:30 – 7:30 p.m.).

**Schroeder Milk Company** advises that they have discontinued the line of returnable half-gallon milk and juice products. Purchases of the half-gallon returnable container have declined by over 80% since 1994. The associated energy used to wash fewer and fewer bottles plus the ever-increasing cost of replacing worn and damaged bottles no longer made this package environmentally-friendly. WFC will continue to accept empty returnable Schroeder containers for full credit on deposit until **March 31, 2003**.

We've got some sprucing up and re-arranging to do to accommodate new equipment, improve product placement and kick-off **WFC's 10th Anniversary on 4th Street**. We apologize in advance for any inconvenience to your shopping experience during the second and third

[continued on page 2]

## You Oughtta Be in Pictures!



## Then & now

**Whole Foods Coop Store front on 8th Street (above). Michael Karsh and Sharon Murphy at the 4th Street location (left). The new produce section, the old bulk section (below).**



## Thank You to Board Members\* of Whole Foods Community Co-op, Inc.

WFC's structure requires dedicated, knowledgeable and visionary Board members to represent the needs of the membership and preserve the Co-op's financial integrity while ensuring the Co-op fulfills its mission. The following members accepted that responsibility, made the decisions and provided that leadership that brought WFC into a new century with an expanding membership, financial security and hope for the future.

**1970 - 1975** In the WFC's early years there were "business" meetings and "potluck" meetings. Board members are not defined as such in the



[www.wholefoods.coop](http://www.wholefoods.coop)

Garbanzo Gazette

Published by Whole Foods Co-op  
1332 E. 4th St. Duluth, MN 55805  
218-728-0884 218-728-0490 (fax)

The Garbanzo Gazette is published six times a year (January, March, May, July, September, November) for the member-owners and patrons of the Co-op. Views and opinions expressed in this newsletter do not necessarily reflect those of the Co-op management, board or member-owners. Submissions must be received by the 1st Tuesday of the month prior to publication. Refer submissions and questions to Dianna von Rabenau.

Editor: Dianna von Rabenau  
Design: Maryl Skinner, M Graphic Design  
Drawings: Dawna Brissette  
Contributions: members & staff  
Mailing: Barcodes Plus  
Printer: Service Printers

Minutes but these folks, including Muriel Engstrom, the first WFC employee, attended a lot of meetings.

Susan Askelin  
Lucy Brenning  
Robert Brenning  
Arno Kahn  
Kitty Kavanaugh  
Julie Kehoe  
Kathy Leeman  
Lynn Mayo  
Joel McClain  
Teri McClain  
Jay Newcomb  
Mary B. Hauser Newcomb  
Diane Powers  
John Powers  
Mark Ruddy  
Mary Scott  
Gretchen Van Hauer  
Chuck Williams

**By 1976**, there are official Board Meeting Minutes though the list of attendees sometimes includes interested members and representatives from Energies Unlimited (later Creative Energies), WFC's management collective, who may or may not have served as elected Board members.

Dave Adams  
Leo Babeu  
Don Bacig  
Julie Ball  
Jane Blaumeiser  
Kathy Bogen  
Jan Brandt  
Sue Brown  
Melanie Coughlin  
Jodi Dansingburg  
Chris Dantis  
Terry Donovan  
Chris Drew  
Mary Jo Drilling  
Wendy Dudderar  
Susan Dunn  
Muriel Engstrom  
Gary Fields  
Jane Fisher

Steve Froemming  
Jim Ganahl  
John Glendenning  
Richard Gose  
Kerry Grant  
John Hagen  
Ted Haglund  
Dave Hanlon  
Mary Hayner Thielen  
Mary Helgesen  
Kim Herschler  
Michelle Jackman  
Kaye Jacobs  
Toni Johnson Morse  
Stan Kaitfors  
Kay Kleffman  
John Kulich  
Joyce Kunz  
Al Kurki  
Dan LaLiberte  
Fran Lamberson  
Stephanie Lemenowsky  
Dianne Levitt  
Sister Jeanette Martell  
Joe Mattila  
Alan Max  
Micky McGilligan  
Robin McIntyre  
Sharon Murphy  
Virginia Nelson  
Mary Beth Nevers  
Eleanor Nichol  
Dave O'Donnell  
Stan Owens  
Kristen Palm  
Jake Peters  
John Plock  
John Powers  
Linda Powless  
John Rogers  
Ron Salvesson  
Kim Samuelson  
Jessica Savitskie  
Skip Shreffler  
Kevin Sikkila  
Fran Skinner  
Candy Solowiej  
Verne Simula  
Marshall Spencer  
Steve Tickle  
Mary Treuer  
Pam Vittorio  
Chris von Rabenau  
Fran Weber  
[continued on next page]



reetings from your Whole Foods Co-op Board of Directors. This board report comes to you, not from the board president, but from the board vice-president.

When we elected **Katie Neff Dawson** to another term as president this past November, she agreed with one condition: that we would take turns writing the board report so she wouldn't always have that responsibility and would be free to concentrate on other presidential matters.

An important but often overlooked aspect of the WFC board's responsibility is "visioning." Besides attending to the nuts and bolts of monthly meetings, committees and other board responsibilities, we try to set aside time to plan—and dream—about the WFC's future. Although we "vision" every time we meet, email, or talk as a board, a perfect time for visioning is during board

retreats, when we can be free of outside distractions and focus solely on our Co-op. It's been difficult for us to schedule our annual board retreat this year because our schedules are so full. **Geiger Yount** resorted to creating a conflicts spreadsheet so we could choose a common free time! What we decided on was a retreat-and-a-half: one Saturday in January with just the board (and general manager **Sharon Murphy** and assistant manager **Christof von Rabenau**), then one weekend overnight in April with consultant **Marilyn Scholl**, who has worked with us in the past.

So on January 25, we met at a local B&B to review the Board's goals we had set for 2002, to talk about goals for 2003, and to literally close our eyes for a few minutes and dream about the WFC of the future. We came up with pages and pages of ideas, fantasies, inspirations, fears, and hopes. Some of them were crazy, and some were so crazy they just

might work. This mini-retreat was energizing, we bonded with new board members **Claire Kirch** and **Chad Coffey**, and it warmed us up for our full retreat in April and for the CCMA conference in Lexington, KY in June. And frankly, it was refreshing to have a meeting that didn't involve financial statements or agonizing over new building sites!

We'd like to remind you that contact information for each Board member can be found in the *Garbanzo Gazette* and on the website at [www.wholefoods.coop](http://www.wholefoods.coop).

We'd also like to remind you that that WFC members, not just board members, can serve on the membership committee and the food policy committee.

We hope your crocuses and snowdrops are pushing up through the mulch and sidewalk grit, and we'll see you at **WFC's Earth Day celebration** in April.

## Thank You to Board Members\* of Whole Foods Community Co-op, Inc.

**WFC opened at its current site on March 31, 1993.** Board Minutes since that time are quite accurate in designating who attended, in what capacity and, if late, how much late!

Carol Andrews	Katie Neff Dawson	Jean Sramek
Jessica Blacketter	Mary Rhodes	David Syring
Jenifer Buckley	Sandy Sandbeck	Dave Updegraff
Chad Coffey	Carol Saranpaa	Cele von Rabenau
Paul Fish	Ginny Shapiro	Gina Young
Beth Fredrickson	Carolyn Sheets	Geiger Yount
Bob Gabres		
Kathy Hermes		
Dianna Hunter		
Rita Hutchens		
Claire Kirch		
Juliette Kurtz		
Koresh Lakhan		
Mike LeBeau		
Katie Murphy Sheets		

*\*Each name is listed once although many Board members served multiple and, not always, consecutive terms. Apologies to any Board member whose name is misspelled or not included.*

## News Bites

from page one

weeks of April. We do not anticipate closing the store for any of this work, but will post notice at the checkout and on WFC's web site ([www.wholefoods.coop](http://www.wholefoods.coop)) if plans change.

**Next Member Appreciation Day: Wednesday, April 9, 2003.** WFC members in good standing receive a 5% discount on eligible purchases on that date. The previous Member Appreciation Day smashed the previous single day sales record by over \$2,000 so we hope you won't let a little remodeling get in your way!

# CONSERVATION TECHNOLOGIES

**PRODUCTS AND SERVICES  
FOR HEALTHY, ENERGY AND  
RESOURCE EFFICIENT HOMES.  
218-722-9003**

## Ventilation

*innovative air solutions*



# VENMAR®

Poor indoor air quality can directly affect our family's health as well as health and durability of our homes. Today's homes incorporate energy efficient doors and windows, have higher levels of insulation and reduced air leakage. However, this energy saving strategy alone can cause excessive window condensation, increased mold growth and poor indoor air quality.

VENMAR mechanical ventilation can effectively control excessive moisture and improve the quality of the air we breathe by diluting it with outside air. The homeowner has the ability to control the rate at which it "breathes" according to their lifestyle. Filters purify the incoming air from dust particulates and pollen.

Heat and energy recovery cores economically reclaim tempered house air before being exhausted to the outside, providing a "comfortable" exchange of air regardless of the season. Control the way your home breathes with a reliable VENMAR heat recovery ventilation system for an energy efficient, comfortable, balanced exchange of air for you and your home.



## Dehumidification



ULTRA EFFICIENT DEHUMIDIFIER

A large number of new and existing homes experience a damp and musty smelling basement. This provides a breeding ground for mold and fungi growth and house dust mites.

The Santa Fe Ultra Efficient Dehumidifier will solve your humidity/moisture problems.

- Removes over 100 pints of water per day. *Triple the performance of other dehumidifiers*
- 2-3 times more efficient. *5-8 pints per kWh*
- Plugs into standard outlet. *Draws less than 7 amps.*

## WE ALSO OFFER THE FOLLOWING PRODUCTS AND SERVICES:

- Venmar Heat Recovery Ventilation
- Photovoltaic Solar Electric Systems
- Air Quality Testing
- Blower Door Tests
- Energy Design

VISIT OUR SHOWROOM AT  
4804 Oneota St.  
Duluth MN 55807

Monday thru Friday, 8 AM to 5 PM

CHECK OUT OUR WEBSITE

[www.conservtech.com](http://www.conservtech.com)

Email: [info@conservtech.com](mailto:info@conservtech.com)

## ENERGY TIP OF THE MONTH:

When heating your home, close a bedroom door and heat register, or close off an unused room entirely, and save about \$50 a year.

### What's happening with the Women, Infants and Children (WIC) Supplemental Food Program

For a report on the February 10, 2003, public meeting sponsored by the Co-op featuring Betsy Clarke, Executive Director of the MN WIC Program, please visit WFC's web site. Along with many other cuts, Governor Pawlenty has proposed elimination of all state funding (\$3.58 million) for the WIC program. WIC administrators may be forced to cut back allocations to counties, tribes and other WIC providers by 54% for the remainder of this fiscal year.

After June 30, there would be no state dollars available which will result in women and children being cut from the program and/or placed on waiting lists. Some smaller counties may have to eliminate their programs, forcing clients in rural areas to travel longer distances for services.

As we were hoping for additional funding for the WIC program to re-institute access to organically grown foods for WIC recipients in Minnesota, news of the proposed budget cut is very sobering.

#### Expansion Update

As of February 2nd, we are assessing feasibility of two sites in the East Hillside. I am pleased to report that there are still sites to consider in this area. One of these sites is a new option. Development plans and timeline (ours and theirs) on the other site have changed since we considered it over a year ago, so we're taking another look. It is some consolation to remember that we asked about availability of our current site three times over three years before it became available!

#### Reset Plan

Meanwhile, we are putting remodeling plans into action at

our current site this April. One of the primary recommendations from the 2002 audit of our store conducted by the Cooperative Grocers

Association Midwest was to do a more logical job of grouping products, e.g., all the cheese in one place; all the bread in one place; the Deli grab-and-go items next to the Deli, more room for milk and dairy, etc.

Ah, logic—seems so obvious but it has taken us several months to figure out how to make it all happen and keep the peace among departments.

Please pardon our dust during the second and third weeks of April as we roll out the new look. Then join us in celebrating:

- WFC's Sales \$500,000 to \$3,500,000
- % of Sales to Members 40% to 60%
- Employees 24 to 48

## Ch-ch-ch-ch-ch-ch Changes

### Thank you for your support

**REAL PEOPLE • REAL EXPERTISE • REAL SERVICE**

**ENROLLED AGENT**

- INDIVIDUAL
- SELF-EMPLOYED
- SMALL BUSINESS
- FARM
- PARTNERSHIP
- CORPORATION



**TOM & LINDA CURRAN**

**CURRAN TAX SERVICE**

**230 E. SUPERIOR STREET**

**218.720.6000**

**ELECTRONIC FILING**

**IRS REPRESENTATION**

## NEW BULK PRODUCTS

Dancing Star Farms "Fruit Squares"  
Organic Dried Papaya

## FREEZER SECTION

Promise Land Organic ground beef  
Food for Life low carb bread  
Food for Life china black rice bread  
Food for Life red rice bread  
Amy's cheese pocketfuls  
Amy's spinach pocketfuls  
Van's blueberry waffles  
Amy's veggie loaf dinner  
Amy's family size vegetable lasagne  
Cedarlane teriyaki vegetable wrap  
Ethnic gourmet peanut satay chicken  
Ethnic gourmet shahi paneer  
Fresh frozen carrot juice  
Cascadian Farms sliced peaches  
Omega salmon burger  
Glaceau carbonated smart water

## COOLER BY THE LAKE

Midwest Harvet firm tofu  
Mountain High 32 oz. original style plain yogurt  
Wallaby blueberry 6 oz. yogurt  
Whole Soy 6oz yogurt  
blueberry, peach, raspberry, lemon flavors

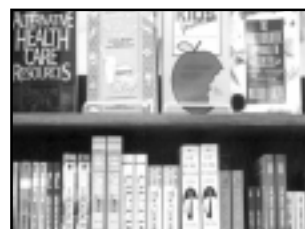
## HABA HABA

Windemere essential oil blends  
(12 varieties)



## NEW BOOKS

Recipes for a Dairy Living  
Organic Beauty  
Organic Cookbook  
What to Expect When You Are Expecting  
Gluten-Free Desserts  
Directory of Essential Oils  
Sunlight Cafe  
Vegetarian Sandwiches  
Wheat Free Worry Free  
Your Organic Kitchen  
Voluptuous Vegan



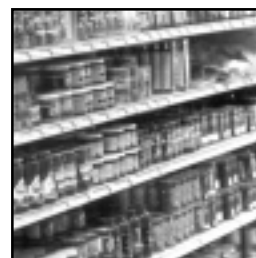
## JAVA JAVA JAVA JAVA JAVA

8 new varieties of bulk coffee (Equal Exchange)  
Love Buzz  
French Roast  
Mind, Body, and Soul  
Sky Blend  
Breakfast Blend  
Bolivian  
Breakfast Blend Decaf  
Sumatran



## GROCERY ITEMS

Annie's Naturals  
Horseradish Mustard  
Bob's Red Mill Pancake Mix  
2 varieties





**Richard Tosseland, L. AC.**  
Licensed Acupuncturist

Acupuncture • Chinese Herbs  
Tai Chi • Qi Gong



**Christal Center**

394 Lake Avenue South • Duluth MN 55802

**218-722-2411**

**BREWHOUSE**  
Brewery and Grille

- FRESH HANDCRAFTED ALES
- GOURMET SANDWICHES
- VEGETARIAN MENU
- HOMEMADE SOUPS & CHILI
- LIVE ENTERTAINMENT

*Find us in the historic*  
**FITGER'S BREWERY COMPLEX**  
606 E. SUPERIOR ST  
DULUTH MINNESOTA

www.brewhouse.net **218-726-1392**



**Jeanne Tondryk**  
Broker/Owner, CRS



**Jeff Urbaniak**  
Broker, CRB, CRS

Visit Our Website to find following info:

- First time Homebuyer
- Down Payment Sources
- Mortgage Calculator
- Tondryk Realty Listings
- MLS Listings MN & WI
- Home Sale/Marketing

**www.tondrykrealty.com**

Duluth  
323 N. Central Ave.  
624-7401

Superior  
1423 N. 8th St.  
395-3759

Whole Foods  
Co-op  
Member  
Appreciation  
Day  
Wednesday,  
Apr. 9

All current  
members  
receive an  
additional  
5% off  
purchases!



## Cedar Grove CHEESE

Recently I was watching the Food Network (I know it sounds geeky, but it happens to be my favorite channel) and they had a show about cheese. Imagine my surprise when they went to Plain, Wisconsin to go through the Cedar Grove Factory.

We went on a tour through the factory and were shown the entire process of cheese making right down to how they process the cheese production wastewater. They actually get the water so clean that it can be discharged right back into the creek that is part of the Wisconsin River Basin. I decided I needed to learn more about this cheese and the company's practices and policies.

### Who are they?

Cedar Grove is a small, family owned cheese factory that has operated over 100 years. They employ six licensed cheesemakers, as well as many other workers, who stir, cut and rotate the cheese by hand as it has always been done. Every morning two Cedar Grove tank trucks pick up milk from 40 nearby family farms, which average about 100,000 pounds of milk per day. This

gets turned into 10,000 pounds of cheese.

### What do they make

Cheddars, Colby, Monterey Jack, Farmer's cheese & Pepper Jack. They also produce three flavored varieties of cheddar cheese curds called Squeaks™, a Butterkase and a new line of "grass-based milk cheese high in CLA, Conjugated Linoleic Acid, which appears to reduce cancer growth."

### rBGH Free

rBGH, recombinant Bovine Growth Hormone, is a synthetic hormone used by some farmers to increase milk production. It is given to lactating cows to lengthen the lactating period in order to produce more milk from the cow.

"In December 1993, Cedar Grove Cheese became the first in the country to assure its customers that its products were rBGH-free." All farmers that supply milk have pledged not to treat their cows with this hormone. At the time, President Bob Willis did not feel comfortable using milk that came from cows that had been given the hormone because the long term health outcomes to humans and cows were unknown and he felt the use of the hormone would hurt farmers financially.

### The Living Machine™

"The Living Machine™ is a working ecosystem. It mimics the water cleaning power of wetlands—only faster using natural microbes and hydroponic plants. Clean water is then discharged into Honey Creek. The wash-water is the result of cleaning milk trucks, tanks and cheese making equipment. The wash-

water is collected and mixed in a 6,000 gallon, underground equalization tank outside the factory. The Living Machine™ is comprised of 10 tanks. The first two tanks are the closed aerobic tanks. The water is aerated and mixed with a culture of microbes. The microbes begin to "eat" everything in the waste stream and break down the nutrients."

After these two tanks, the water then goes through five open aerobic tanks. Racks are suspended from bars on the sides of the tanks which hold plants. The plants help continue the treatment process. The roots trail down into the water and "provide a place for bacteria to cling increasing the diversity and resilience of microbial populations in the system. The roots help oxygen transfer from the bubbles to the water. They also absorb nutrients that aid in their growth. About 15% of total nutrients are removed by plants that grow as much as 6 inches per week!"

The next tank the water passes through is the clarifier, or settling tank. There is no aeration. "As the water enters the tank, solid particles fall to the bottom forming a thick, brown blanket of matter between one and three feet thick. This matter is made up of hungry microbes that have multiplied during the treatment process. Some of them will be returned back to the first tank to begin the cleaning process again. The remaining matter containing most of the nutrients from the water is pumped into a 5,000 gallon holding tank. It is land spread

[continued on page 11]



2003 COMMUNITY LECTURE SERIES

# Revitalizing Your Health

PRESENTERS:

Nancy Sudak, MD

Deborah McClure, DC

**March 13th, Dr. Sudak****Natural Approaches to PMS and Menopause**

Hormonal health is a complicated matter, but may be achieved without the use of synthetic hormone therapy. Learn about how to dramatically improve your hormonal balance and decrease cancer risk with lifestyle and nutrition.

**March 27th, Dr. McClure****Prevention and Natural Treatment of Osteoporosis**

Do all you can to build strong, healthy bones by understanding how diet, exercise, stress, and supplementation can affect bone health.

**April 10th, Dr. Sudak****Personalized Preventive Medicine**

Contrary to the commonly held belief in genetic destiny, we are not relegated to the fate of our genes. Nearly all chronic illness is a result of your genes interacting with your environment (diet, toxic and infectious exposures, exercise patterns, and the experience of stress). Learn how to modify your genetic potential through lifestyle and reduce your risk for specific diseases that tend to run in families.

ALL LECTURES HELD AT:**Peace United Church of Christ****1015 East 11th St., Duluth****Time: 7:00-8:30 p.m. | Cost: \$15/person**

**Dr. Nancy Sudak** received her medical degree from Case Western Reserve University in Cleveland, Ohio, in 1989. She completed her residency in family medicine at the Duluth Family Practice Program in 1992, and has since held various positions within the Duluth community in family medicine, acute care, and college health. She has had a long-term interest in holistic medicine and natural therapeutics, and has been instrumental in bringing complementary medicine to the UMD School of Medicine curriculum. Dr. Sudak is board-certified in both family practice and holistic medicine. Though her clinical focus is functional medicine, her practice style embodies an eclectic blend of conventional medicine, healing traditions, nutritional bioscience, lifestyle modification, and mind-body medicine.

**Deborah McClure, DC**, earned her doctor of chiropractic degree from Northwestern Health Sciences University in 2002 and has completed postgraduate training in functional medicine and clinical nutrition. With an extensive background in natural foods and healthy living, Dr. McClure's work includes high level nutritional assessment and lifestyle management integrated into structural chiropractic care. Her most recent studies are in the areas of fibromyalgia and chronic pain syndromes.



## Northland Health and Wellness

TO REGISTER: Call Northland Health and Wellness at **722-4845**

## “Skin friendly” recipes from Brenda

Now that you have made your resolution to start eating better foods, its is also time to focus on the exterior of your body. You would be amazed if you knew how much substance your skin absorbs. You are unconsciously exposed to thousands of chemicals and pesticides that go directly into your blood stream though your skin so why intentionally slather them on when you can easily avoid it?

We are purposely putting them into our bodies because we don't know any better. When we turn around that bottle of shampoo its hard to understand any, if not all, of the ingredients. Some of these synthetically formed ingredients are not only harmful to your skin, but also the rest of your body.

Look for products that are made with organic ingredients and essential oils rather than artificial fragrances. Here are some ingredients to avoid so we can keep that body healthy, balanced and lookin' good!

- Artificial colors: Artificial colors are believed by some experts to be potential carcinogens
- DEA, MEA, and TEA: These can cause allergic reactions, irritate the eyes, and also dry hair and skin
- Formaldehyde: (Imidazolidinyl, diazolidinxlurea, 2-bromo-2nitropropane-1;3diol, imidazolidinyl urea;DMDM hydantion; and quaternium 15) These forms of formaldehyde cause fairly common skin reactions. Doctors also worry about long term effects of what can happen when applied frequently.
- Synthetic fragrances: Synthetic fragrances can carry

up to 200 individual ingredients and do not have to be labeled on the jar. Potential problems can be dizziness, irritation, and hyper-pigmentation.

•Isopropyl alcohol: This will dry out the skin and leave it without a natural barrier to outside chemicals.

•Methyl-, butyl-, ethyl-, and propyl-paraben: These products are most widely used in cosmetics. They can irritate sensitive skin and may (not yet fully studied) contain xenestrogens.

•Methylisothiazolinone: This is a preservative that has a large potential to cause allergic reactions.

•Paraffin: This is derived from petroleum or coal.

•Sodium lauryl sulfate: This is a detergent that will dry out the skin, interfere with the barrier function and make it easier for chemicals to enter the skin.

•Propyleneglycol: This is a petroleum derivative.

### For a fun and cost effective way to treat your skin here are a few recipes to try out!

#### Citrus Body Scrub

- 6 T unscented liquid body soap (preferably castile or other detergent-free formulas)
- 6 T grapeseed, jojoba, or sesame oil
- 1 T unscented sweet almond oil
- 1/2 c fine ground sea salt
- 1T coarse sea salt
- 1/4 t sweet orange, grapefruit or lemongrass essential oil
- 1/4 t tangerine essential oil
- 4-5 drops lime essential oil

Combine soap and oils together in a bowl until well blended. Slowly add in the salts, followed by the essential oils (which should be spread throughout the mixture). Smooth on small handfuls of the scrub onto wet skin (apply to dry skin cautiously for an invigorating treatment); rub with gentle pressure in circular motions. Rinse well or smooth off in bath.

Store unused portion in tightly sealed (preferably glass) container in a cool, dark, dry place for 6-12 months.

#### One Two Moisturizer and Cleanser

(normal to dry skin types)

Mix together

- 2 tbsp (30 ml) Jojoba oil
- 2tsp (10 ml) Grapeseed oil

Combine in small bottle. Shake to mix. Apply with cotton. Apply lightly. Too much will clog pores.

#### Hard-as-Nails Manicure Treat

- 1T purified water, luke- warm, but slightly cooled
- 1T witch hazel (preferably grain-alcohol based)
- 1 1/2 t natural honey
- 1/2 t alum

Mix above in a low-profile bowl. Soak nails for 10-15 minutes, occasionally massaging cuticles gently. Rinse with cool water. Discard unused portion.

## Lighten up your spring—gingerly

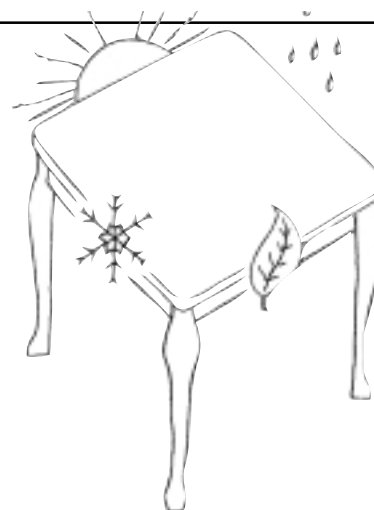
Late winter/early spring is Kapha time--cold and moist. The heaviness that has naturally accumulated since the fall now begins to break up and move. A diet that is light, dry and warming will facilitate this process.

Bitter and pungent tastes are particularly effective, such as dark leafy greens (the classic spring tonic) and hot spices. Of these, ginger is highly regarded in Ayurveda as one of the most sattvic, or balanced, of spices. Its action is stimulant, diaphoretic (sweat-inducing), expectorant, and carminative (gas-relieving). It improves digestion, circulation, and elimination, and settles an upset stomach. It is especially useful in cases of colds, bronchitis, and (with honey) sore throats.

The powder made into a paste is used externally for sore joints and muscles.

Ginger is available fresh or as a dry powder. Fresh is more diaphoretic, dry is hotter and more stimulant and expectorant. Either form can be deliciously incorporated into cooking and baking: think stir fry, curry, miso soup, gingerbread . . .

**Ginger tea** is probably the easiest way to take a dose of this powerful spice. A saucepan of ginger tea was always simmering on the stove at the ashram where I studied yoga one winter. You can buy ginger tea in tea bags, and it is an ingredient in many mixed herb teas. You can also make your own. A caveat: when using ginger tea, do respect its hot and stimulating properties. It may keep you awake if taken right before bed, and it may shorten your temper if you are inclined that way already.



### Ginger Tea

Peel a 2-inch piece of fresh ginger root, slice, and add to 4 cups boiling water. Reduce heat and simmer for 10-50 minutes, depending on how strong you want it. Drink as is or add a little lemon juice or honey after the tea has cooled a bit. You can also make an instant ginger tea by combining 1/8 tsp. dry ginger powder and 1 cup boiling water.

## Gourmet to go features Cedar Grove Cheese, from page 8

when the tank is full, or dried for fertilizer.”

The rest of the water then passes through more tanks with filters, and plants of course, and fish. The entire process from the starting tank to the final tank takes about 3 or 4 days. From the final tank, the water flows through a pipe into a holding pond. The pond provides additional treatment and temperature buffering before the water flows into Honey Creek.

The Living Machine™ “removes 99% of the biological oxygen demand, 98% of the suspended solids, 93% of total

nitrogen and 57% of phosphorus. The resulting effluent is much cleaner than the receiving stream. This Living Machine™ is the first of its kind in a cheese plant. The natural process helps our cheesemakers remember that what goes down the drain matters.”

### WFC and Cedar Grove

Unfortunately we only have access from our suppliers to some of Cedar Grove’s cheeses. We do have access to grass-milk cheese, but due to the lack of grass during the winter months, the supply of grass-milk cheese is sketchy. I hope to bring them

in during the summer months. I do not have access to the Butterkase or to the Squeaks™, however, anyone can order from Cedar Grove through their web site or via the telephone. The web site is [www.cedargrovecheese.com](http://www.cedargrovecheese.com) and the phone number is (800) 200-6020.

If you are traveling through Wisconsin and happen by Plain, WI, I would recommend the stop to take the tour through their factory and see the Living Machine™.

*\*All quotes taken directly from Cedar Grove’s web site or brochure.*



Open to Everyone 7 Days a Week  
1332 E. 4th St. Duluth MN 55805  
www.wholefoods.coop  
(218) 728-0884

## FRESH PERSPECTIVES

March 2003

### Things Ain't Like They Used To Be

There's nothing like the sight of a child enjoying her food. That innocent grin when biting into a fresh peach or the joy on his face when digging into a watermelon. It's enough to make your day, just like that. At that moment, no parent would want to stop and think, "How much pesticide residue is my kid ingesting?" We'd probably all agree there should be enough safeguards in place so that would not be an issue.

Yet, we now know that the guidelines set for pesticide residues have mostly **ignored the differences** between adults and children. Children eat a lot more produce per pound of body weight than adults.

Residue tolerance levels deemed adequate for adults are suddenly inadequate when viewed from the scale of a child's body. Add into the equation the fact that children's nervous system, brain, endocrine system and just about everything else is developing at a rapid rate, and it's not difficult to see how potent chemicals such as pesticides might impact their development.

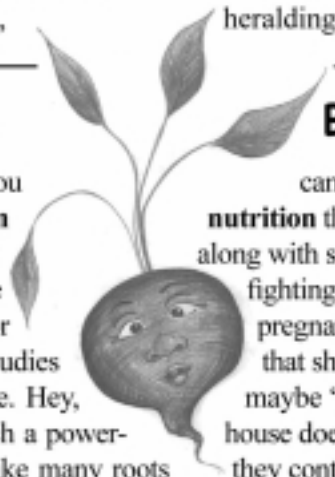
In 1993 a report issued by the National Academy of Sciences brought this information to light and it made headlines across the nation. Suddenly, the safety of the so-called "safest food system in the world" was called into question. Since then,

independent testing and analyses of government residue test reports conducted by the Consumers Union and the Environmental Working Group have revealed that, in some cases, **domestic produce** routinely tested **higher for residues**, or **more toxic residues**, than imported produce. In most cases, residues tested within established tolerance levels but the frequency of positive results as well as the number of multiple residues found in a sample was cause for concern.

It seemed our concerns were heard, when, in 1996, amidst much hope and fanfare, the Food Quality Protection Act (FQPA) was passed, heralding a new era of (*over*)

### VEGGIE OF THE MONTH...

**You CAN Beet'em** An old produce adage goes 'you truth is you can. You see, beet greens are actually **higher in** Beet greens have nearly 2 times the potassium of the root phorus. They are high in beta-carotene, (a valuable disease contain high levels of folic acid, an essential nutrient for prevent birth defects. If that isn't enough, there have been studies greens can actually **lessen a smoker's desire** for nicotine. Hey, on a whole new meaning! Just because the greens are such a power-worth eating. Beetroots are a valuable part of any diet. Like many roots vitamin C, are rich in silicon, and fiber. Their medicinal properties are many: beets are beneficial to the heart and liver, they provide a calming effect on the nerves, improve circulation, and promote healthy menstruation. With this in mind it's easy for everyone to want to keep the beet.



### BEETS!

can't beat beets'. Well the **nutrition** than the beets themselves. along with some calcium and phosphorus (a powerful antioxidant). They pregnant women to help that show that these nutritious maybe 'produce patch' will take house doesn't mean the root isn't they contain a good amount of

they contain a good amount of



pesticide reform to protect children from pesticide residues and promote sustainable agriculture. The **legislation promised to reduce** residue tolerance levels on foods commonly eaten by children, speed up a backlogged review process, and eliminate, or limit the use of, high-risk pesticides.

Yet, **pesticide use continued to rise** in the U.S. and dozens of new materials have been approved that did not meet the new 'safer' guidelines. For instance, the herbicide acetochlor was approved for use and soon showed up as a contaminant in ground water and wells across the country, a probable human carcinogen. It's now banned in New York, but not in California or Oregon, two major agricultural states.

Methyl parathion, an old-school organophosphate-type pesticide, is still widely used on some crops despite the availability of safer, less toxic alternatives. Organophosphates act as nerve poisons on insects, and can damage ours as well. Fortunately, its use has been

cancelled on many food crops but real success would be to stop its use altogether.

Implementing the FQPA will take time. The Environmental Protection Agency has a huge task at hand; with a call to review over 10,000 different pesticide residue limits, change won't happen overnight. We hope they won't lose sight of the importance of these reforms and that they'll get the budgeting and staff they need to continue.

Fortunately, we've seen the implementation of another act—The Organic Foods Act—that offers a cohesive **national standard for organic** foods. You can channel those worries about pesticide residues by growing or purchasing organic produce. Recent studies have shown organic to test significantly lower for residues than conventional produce. Buying organic helps build the case for a better standard for agriculture by supporting farmers who are doing it right.

## Beet Dip

This colorful dip takes **only minutes to prepare** and is **chock full of vitamins** from the raw beets and spinach. It's the perfect antidote to wintertime blues. Serve as a dip with crudité's or as a spread on toasted French bread. Even if you aren't a beet lover you'll love this dip recipe. If you aren't ready to start with raw then try this with cooked beets first. You can also substitute cottage cheese or crumbled tofu for the cream cheese. Serves 6 to 8.

1/2 lb. red beets (1 large), peeled and coarsely chopped  
1 large scallion, chopped  
1/4 cup (packed) chopped fresh spinach  
8 oz. cream (or cottage) cheese (or even crumbled tofu)

2 tsp. freshly squeezed lemon juice  
1/4 tsp. salt  
2 tsp. snipped chives

- In bowl of food processor, pulse beets, scallion and spinach until finely chopped.
- Add cream cheese, lemon juice and salt, and process until well blended, leaving some texture in dip. Transfer to bowl, and stir in chives.

### Ask Dr. Patty Produce

**Q:** Do I have to peel my beets before I cook them? It's very messy and stains the cutting board, which makes me not want to fix them. Also, would you mind sharing what is your favorite way to cook them? Thanks, Colin Airyman

**A:** Dear Colin, Keep your skin on, and abstain from beets no longer. Try roasting your beets with a drizzle of olive oil, a few cloves of garlic, and some quartered onions. Roasting concentrates the beet's flavor, preserves the beautiful red color, and brings out the sweetness from its natural sugars (as high as 8%). Once cooked the skins will slip off easily.

**References for this issue:** *Our Stolen Future*, by John Peterson Myers, <http://www.ourstolenfuture.org/NewScience/oncompounds/2002-0508bakeretal.htm>; *Same As It Ever Was*, <http://www.ewg.org/reports/sameasiteverwas/samepr.html>; "How Safe is Our Produce," Consumer Reports, March 1999; *The Anatomy Of A Dish* by D. Forley with C. Young; <http://www.samcooks.com/EatFresh/Vegetables/Beets.htm>; Recipe from the Vegetarian Times January 1 2003 p. 64



## Laurie L. Chapman, N.D.

"Your Natural Choice for Health"

5670 Miller Trunk Highway  
Duluth, MN 55811

218-729-1404 - Office  
218-348-1101 - Cell

- ❖ Nutritional Medicine
- ❖ Botanical Medicine
- ❖ Homeopathy
- ❖ Hydrotherapy
- ❖ Bowen Therapy



Laurie Chapman is a Naturopath and a graduate of the National College of Naturopathic Medicine in Portland Oregon, a four-year accredited medical program.



Anahata

## Spiritual Astrology

Readings offered by  
Bobbie Larson

certified by the White Eagle  
School of Astrology, England

*Learn to use the spiritual power  
of your horoscope*

218-724-3872



## GO AHEAD, DO WHATEVER YOU WANT.

The choice is yours! That's carefree living at Mount Royal Pines apartments. You'll find both independent living and full-time assisted living for older adults. Enjoy socializing, three meals served each day, cleaning and maintenance. All within walking distance to shopping, post office and restaurants. Go ahead, live a little. Call for a brochure or tour, or log onto [www.lifepride.com](http://www.lifepride.com).

E. St. Marie St. at Wallace Ave., Duluth

MOUNT ROYAL  
*Pines*  
APARTMENTS

MOUNT ROYAL  
**PINES III**  
assisted living

(218) 728-1009 (218) 724-5500



## Toward, Inc.

Immerse yourself in Spanish!

Our 6 week Spanish immersion sessions offer:

- A proven method for faster language learning
- Experienced instructors who are native speakers
- Small class size (limit: 15 students)
- Fun activities to learn about Hispanic culture--art, music, food, relaxation
- "Destinos" video programs

Classes meet once a week for 6 weeks  
Mondays or Tuesdays, 5-8 pm  
at the Immigrant House

To register call or email:  
tel: 727-2572 [towardinc@aol.com](mailto:towardinc@aol.com)

*Heat your home for 1/2 the price.*

- Renewable heating source
- 85% efficiency
- Clean burning
- Environmentally safe
- No chimney required

**\*Check us out at the Earth Day Fair\***

*\*Mention this ad for free installation\**

### Corn Heating Systems

Manufactured By **AMERICAN Energy Systems**

Corn Furnace  
Forced Air



Country Side  
Corn Stoves

**Chad Binsfield ~ Dealer**

(218)940-8844 • email: binsfield007@aol.com

## EAGLES NEST MASSAGE THERAPY

*The Art and  
Science  
of Touch*

*By appointment:  
days, evenings  
& weekends*

### DOWNTOWN

Medical Arts Bldg  
324 W Superior St, Suite 509  
722-2918

### MILLER HILL

Next to Schneiderman's  
1417 Sundby Rd  
625-2353

[www.eaglesnestmassage.com](http://www.eaglesnestmassage.com)



### FREE PARKING

Gift Certificates  
Available

Available in Bulk at  
Whole Foods Co-op



Organic  
and  
Fair Trade  
Certified coffees



Roasting is our craft.  
Service is our mission.

Locally roasting coffee daily since 1990.

1330 East Superior Street, Duluth, MN 55812



**PLEASE**  
**yourself**

AT YOGA NORTH

find your true north,  
ENROLL TODAY

explore our online schedule and more  
[www.yoganorthduluth.com](http://www.yoganorthduluth.com)

Directors: Deborah Adele & Ann Maxwell • (218) 733-1375  
Yoga North, 4628 Pitt Street Suite 208, Duluth, MN 55804



*The Health Care*  
*You've Been Looking For*  
Reconnect with the joy of living.

VIRGINIA SHAPIRO, DC

NANCY SUDAK, MD

DEBORAH McCLURE, DC

We provide the most comprehensive natural health care in our region. We look at the whole person, not just the site of the problem, when we evaluate and treat people with conditions such as fatigue, overweight, back and joint pain, women's health problems, depression, anxiety, sleep disorders, headaches, fibromyalgia, digestive problems, hormonal imbalances, blood sugar conditions, chronic infections, and other chronic and acute conditions. **To learn more, call us for a brochure.**



**Northland Health and Wellness**

1525 London Road, Duluth | [www.YourHealthandWellness.net](http://www.YourHealthandWellness.net) | **722-4845**





ou're going to want to check out the incredible taste of the new individually-wrapped fruit bars now available in the bulk aisle. Wow! These were originally a "veggie and fruit bar" that was long on the veggies and short on the fruit. It has been reformulated into something more universally palatable; in fact they're downright awesome.

There are two varieties to choose from: "Veggie", which is a fruit and vegetable mixture, but unlike the previous incarnation, it has no garlic-parsley onion taste. Believe it or not some people liked that—including me – but this new veggie bar is basically the taste of a fruit leather, only more so—sweet, tangy, and chewy.

Also sweet, tangy, and chewy is the other flavor, "Tropical Fruit", which must be tried to be believed.

Every now and then I will substitute one of these flavors with the "Pineapple Ginger" kind, which are also super good as you might imagine, and like the other ones, each bar contains 1-1/2 servings of fruit!

These fruit bars are from the small company Dancing Star Farms from Buckland, Massachusetts; the same company that brings us our fabulous and amazing "Chunks of Energy", in "Carob Spirulina" and "High-Country Gorp" flavors. All their products share the same high quality and are highly recommended.

Ooh! Ooh! I just thought of the other new thing y'all should try in the bulk department; the new variety of dried papaya. These are now ORGANIC, and



## I gotta crow!

don't know, the quality is much higher than the old commercial kind, with only a negligible price increase. Wow are these good. The old commercial kind were always so hard to chew, and the flavor was okay but nothing like these. These are still

chewy to be sure, but are much softer. And tastier – they have that real papaya taste; you'll definitely be able to tell the difference.

For that matter, all the organic dried fruit these days is just terrific. Try some of these and you'll never go back. Just the other day in the store I had a conversation with a gentleman who said he loved the organic dried white figs, because the ones you usually find are dry, but ours are always so moist, and with such a lively taste.

Other great examples are the new organic pineapple rings, organic mango slices, and organic dried fruit mix. Come on down and see why I'm crowing so loud.

### Thank you for your support

**Gary G. Kohls M.D.**

Special interest in the  
Evaluation and Treatment of:

- Depression
- Insomnia
- Obesity
- Fibromyalgia
- Migraine Headaches
- Posttraumatic Stress Disorder

For Appointments  
218-628-2130



A Family Physician  
offering holistic,  
compassionate care,  
and an innovative  
approach linking  
body, brain and spirit

Medically grounded, unhurried care,  
with healthy, effective alternatives to prescription anti-depressants

Office located at 215 North Central Avenue

## Welcome, New Members!

Gretchen Madson  
Stephanie Johnson  
Kathy Carlson  
Andy Goldfine  
Audrey Monicken  
Carmen Johnson  
Tracy Schindler  
Rena Bumgardner  
John Durward  
Andra Karna  
Eric Viken  
BevaLee Wunderlich  
Casey McGee  
Larry Bottorff  
Michael Mencil  
Sarah Beaster  
Michelle Abrahamson  
David Larson  
Mike Stehlin  
Julie Rosenwinkel  
Royanne Pedersen  
Julie Howe  
Candy Barbo  
Karen Olson  
Richard Thomas Jr.  
Chris Rohrer  
Mary Marchel  
Alina Mustonen  
David Anderson  
Gregg Salisbury  
Berti Mackey  
Robert Stevens  
Judy Holbeck  
Carl Nolte  
Gail Vesel  
Linda DuBois  
Ann Maxwell  
Garry Hooghkirk  
Sue Sojourner  
Antony Elliot  
Bonita Martin  
Donna Stolpe  
Brigid Lindquist  
Melissa Boyle  
Kristeena Newberg  
Helen Nelson  
Raymone Kral  
Alissa Acker  
Elizabeth Sjoberg  
Emerson Tenants Co-op  
Jean Beauduy  
Melody Hernandez  
Aron Gosling  
Marion Anderson  
Jeff Durfee  
Jarrod Novotny  
Martha Dwyer  
Luann Kleppe  
Robin Tedlund  
Jeanne Peloquin

18

Thank you for your support

[www.EdmundsLLP.com](http://www.EdmundsLLP.com)

One easy website for all your real estate needs.  
All Duluth homes listed. Virtual tours! Mortgage calculator.  
And more.



Multiple Listing Service  
**MLS**



**REAL  
Home  
TEAM**

**EDMUNDS COMPANY**

*Real Estate LLP*

2200 Water St. - on Lakewalk • 724-7900 • 800-777-4531 • Established 1952



*I will...*

- spend more time in the garden...*
- walk with my husband along the river's edge...*
- I will read more with less TV...*
- make more time for coffee and friends...*
- I will take care of myself.*

**DULUTH  
NATURAL  
MEDICINE &  
CHIROPRACTIC**

Dr. Robb E. Anderson, DC. ND.  
Colleen Anderson, D.Hom

1731 London Road • Duluth, MN 55812 • 218-724-4525

**Yoga Tree Studio**  
1323 Broadway Street. Suite 220  
Superior, WI 54880  
(715) 392-5055

## **HATHA YOGA LEARN THE BASICS**

The techniques of yoga balance body and mind. You will develop strength and flexibility while creating inner peace and harmony.

Join us for an introduction to hatha yoga. You will get instructions on posture, breathing, and receive a personal practice routine.

\* March 4 – April 8, Tues @ 5:00-6:15 & 6:30-7:45pm  
(\$55)

\* March 10 – March 27, Mon & Thurs @ 10-11:15am  
(\$55)

Multi Level Classes- Mon @ 12-12:40pm,  
Thurs @ 5-6:15 & 6:20-7:40 pm,  
and Sat @ 12-12:40pm

\* Must call to register-Class size limit is 10  
[www.yogatrestudio.net](http://www.yogatrestudio.net)



## **Jill's Hinckley Mobil**

Car Wash • Pay-at-Pump • Non-oxy gas  
Specialty Oils/Plugs • Bread • Milk • Snacks  
Hot Coffee • Cold Pop • Great Cappuccino!

**Live Bait!**

**Offering Natural & Organic Snacks, Foods & Beverages, Energy Foods & Alternative Health Aids**

SW corner of I-35 & Hwy 48 at Hinckley Exit • Your half-way stop on I-35

## **DULUTH'S LARGEST SELECTION OF CERTIFIED ORGANIC WINES!**

- OVER 1,000 HAND PICKED WINES
- KNOWLEDGEABLE STAFF
- LARGE SELECTION OF WINE RACKS, STEMWARE, OPENERS, BOOKS, & MORE!



*Wine Cellars*

*fine wines, spirits and beers*

Fitzer's Brewery Complex  
600 E. Superior St.  
Duluth, MN 55802  
218-733-0792

"The function of art is to do more than tell it like it is –  
it's to imagine what is possible."

—bell hooks

**second annual**

**The Art of Peace**

**March 22, 2003**

**First United Methodist Church: the Coppertop**

**Duluth, MN**

**[theartofpeace@hotmail.com](mailto:theartofpeace@hotmail.com)**

**389-3220**



Sharing space as

**Full Circle**

**Center for Psychotherapy  
Spiritual Direction and Bodywork**

A professional group with a holistic approach  
to mental health and wellness,  
attending to the needs of mind, body and spirit.



Nancy Hirtzmann, NCMT, Massage Therapist  
Beverly Harries, MS Ed, Spiritual Director and  
Divorce Transition Consultant  
Kelly Ravenfeather, MS Ed, LMFT, Licensed  
Psychologist, Licensed Marriage & Family Therapist  
Chris Henley, MS, Licensed Psychologist

230 East Superior Street  
Duluth, MN, 55802  
218-726-5433

# Whole Foods Co-op 5th Annual Earth Day Fair



11-4pm

Free

Everyone Welcome  
at the 14th Ave E. and 3rd St.  
Farmer's Market

Saturday, April 19th

[www.wholefoods.coop](http://www.wholefoods.coop)

the best paper money can't buy  
**Reader**  
weekend news, arts, and entertainment weekly

**NEWS 6**  
*In touch.*

The Green Mercantile  
Sustainable Products for a Healthier Planet



is very exciting to realize this is **Whole Foods Co-op's 10th Anniversary on 4th Street** and 33 years in all. We moved here from 7th Avenue and 9th Street and almost tripled our space along with huge sales and a bunch of new members. Now we are 1800 active members strong with new members nearly every day. Thank you all. I hope you enjoy the pictures of the past in this issue.



We also have experienced increased working member participation over



## Fourth and Ten

the last few years. Thank you working members. I hope many of you will be interested in the upcoming Earth Day Fair on Saturday, April 19th. Last year was a big success with the much-needed help of a lot of members. If you are interested just contact me.

If you want to participate at the **Earth Day Fair** as a vendor, I look forward to that as well. You can log on to our web site at [www.wholefoods.coop](http://www.wholefoods.coop). Last year

over 1300 people came to the fair and I expect that number will only increase this year. We will also be hooking up with the Gallery Hop this year (that should help a little with parking.) Look for artists, animals, musicians, community groups, food and more. The event is free again this year and I hope to see you there.

Don't forget about the next **Member Appreciation Day** on Wednesday, April 9th. Load up on staples and special orders, while getting an extra 5% off your purchase. Remember special orders have their own member discount ranging from 10 to 30% depending on which department you order from.

Well, have fun and take care everyone.

## Thank you for your support



## Bring More Love Into Your Life!

*An intensive forgiveness workshop based on  
the psychosynthesis model of wholeness*

**@YOGA TREE STUDIOS**

1323 Broadway (Upstairs above Alternatives Book Store), Superior WI

**April 25 - 27, 2003**

Fri 7:00 - 9:00 pm, Sat 10:30 am - 6:30 pm, Sun Noon - 5:00 pm

Learn what blocks the giving and receiving love. Forgiveness is easy once you know how. Learn a simple 8-step method that dissolves and transforms unfulfilled expectations into preferences. Release the pain from those that have hurt you or from long held disappointing situations that keep you down. **We forgive to heal ourselves!**



RSVP - limited to 20 participants

Diana Turner • 651-353-8672 • [forgiveness@earthlink.net](mailto:forgiveness@earthlink.net)

2100 1st Ave. S. Mpls., MN 55404

\$175.00 after 4/15 - Early Reg. \$125.00

## Advertising rates



Note:

25% discount to members

- 1/8 page \$45
- 1/6 page \$55
- 1/4 page \$75
- 1/3 page \$85
- 1/2 page \$125
- Full page \$195
- Insert \$150

**WFC Board of Directors****Chad Coffey**

1331 Press Camp Road  
Two Harbors, MN 55616  
834-6035 [ccoffey@irresistibleink.com](mailto:ccoffey@irresistibleink.com)  
Term expires in 2004

**Koresh Lakhan, Secretary**

1804 Vermilion Road  
Duluth, MN 55803  
724-7421 [hanskor@msn.com](mailto:hanskor@msn.com)  
Term expires in 2003

**Claire Kirck**

818 North 19th Avenue East  
Duluth, MN 55812  
724-4624 [clairekirck@aol.com](mailto:clairekirck@aol.com)  
Term expires in 2004

**Katie Neff Dawson, President**

5993 Arnold Road  
Duluth, MN 55803  
721-3065 [knd@cpinternet.com](mailto:knd@cpinternet.com)  
Term expires in 2003

**Jean Sramek, Vice President**

316 Mygatt Avenue  
Duluth, MN 55803  
724-0237 [sramek2@yahoo.com](mailto:sramek2@yahoo.com)  
Term expires 2003

**David Syring**

2809 Morris Thomas Road  
Duluth, MN 55811  
722-3602 [davidsyring@yahoo.com](mailto:davidsyring@yahoo.com)  
Term expires 2003

**Geiger Yount, Treasurer**

3000 London Road  
Duluth, MN 55804  
724-0652 [geigman@aol.com](mailto:geigman@aol.com)  
Term expires in 2004

e-group address for entire Board  
including General Manager  
Sharon Murphy:  
[wfcbod@wholefoods.coop](mailto:wfcbod@wholefoods.coop)

**Mission Statement**

The Whole Foods Co-op is committed to the Cooperative Principles, to providing its members, patrons and community the highest quality nutritious whole foods, and to the products and practices which make positive changes in the life of its community, employees and environment.

**Co-operative Principles**

1. Voluntary and open membership.
2. Democratic member control.
3. Member economic participation
4. Autonomy and independence.
5. Education, training & information.
6. Cooperation among co-ops.
7. Concern for community.

Sphagnum Moose oversees the Co-op's book shelves.

Below, General Manager, Sharon Murphy, and a previous co-manager, John Fisher-Merritt, photographed shortly before the move (10 years ago) to 4th Street.

**Thank you for your support**

**Breath Integration** can transform your life. Creating the life you desire, dream of, and deserve is possible. Attend a **free seminar** to receive tools you can use right away and learn about how **Breath Integration** can help you create your heart's desires, gently and easily. You have the power within you to be, do, and have whatever you want.

**Reiki** (REI = Universal; KI = Life Force Energy) is a deceptively simple, yet profoundly effective, energy healing technique. Recipients of **Reiki** ("ray-key") report a wide range of results including: deep relaxation; increased physical and creative energy; release of pain, congestion, and pent-up emotion; weakening of addictions; and strengthened immune response.

Carol Gieseke  
218-728-3385

1714 E. Fourth Street  
Duluth, MN 5812

PLEASE CALL FOR SCHEDULING OR OTHER INFORMATION.

**N**ot being a person who watches much television, I still have seen my share of reality television. Mostly a handpicked group of people subjected to preposterous circumstances striving for a dubious reward. We get to watch the devolution of friendship, committed relationships and social values in a parade of what would seem to be worst in our natures. The popularity of these programs at a time of dire world crises and national tragedy could leave a person worrying about whether we are ready to face the sorts of challenges that are cropping up on all sides. The wherewithal is there, we know that much, but is the resolve?

Somewhat like the ragged and brown winter which has comprised most of what we have received this year, the financial situation in the state and nation are quite serious for all but the truly affluent. There are many schools of economics, which suggest ways to resolve our present problems, but it, remains that there will be significant cuts on our state level for many worthy programs. This will most certainly include agriculture and so by extension that small slice of the pie earmarked for sustainable agriculture. However, in the very heart of optimism in ingenuity which is successful small-scale farming is also the promise for a more stable economy in which more participate and benefit from the wealth (both monetary and resource) of Minnesota.

Whatever the merits of stimulus packages from the White House, and Congress, we are all on the ground where these answers will be tried. While listening to the gubernatorial debates last year I was struck

by some comments by Ken Pentel on this subject. While he seemed to have a grasp of the importance of sustainable agriculture for communities and health, and specifically Organics; he seemed rudderless in terms of the financial import of grain and other large-scale crops to the fiscal well-being of the state, instead pitting one against the other. While this makes ideological sense, it doesn't make much practical sense in that Minnesota must continue to exist amongst other states, and in a global marketplace that is not going to go away or leave Minnesota alone. It is too narrow a vision, as if our fate is in our hands as a self-selecting community, and denies the fundamental interconnectedness that is our modern society.

Sustainability must begin to be looked at in the larger context of what strengthens the society at large, and how that society can be bettered, as well as the good of the land and small farming concerns. In order for sustainability to be practicable, especially in hard times, it must never lose the vision of the importance of what this shift means. Likewise, it must not lose sight of the fact that it exists within a context whose rules and structure it cannot erase by sheer willpower. Rather, the promise of sustainability is in its ability to transform and re-invigorate what has been sidelined in terms of the importance of the family farm and small communities. In this way we can make a unique and transformative place for an essential element of a healthy society, not parallel to but engaged with the large and complex picture of the millions in the state who are trying to live and do the best for their families.

The leaven of what might be a more traditional vision could go further to reach the public with



## The Back Forty

what we (rightly I believe) think they are not finding with the status quo. But no rising is going to happen if we don't acknowledge that we are, like it or not, part of a whole, moving in a direction that we can effect but not control. Especially in times where finances are crunched, parallel efforts make little sense. Working toward the common goal of the well being of those living in the state should be the direction of all. The economic rapaciousness of some corporations and interests cannot be denied, and should never be undressed. However, given the dire circumstances of the state and federal budgets, when better to move outside the box of the likeminded, and into the larger mutual self-interest, that comes only clearer when business-as-usual is in trouble?

Reality television only gives us struggles whose import are essentially nil, while we have many more pressing matters at hand. Unlike the TV world, this struggle has the potential to strengthen and bring about the best for all involved. We must be ready to appreciate the efforts and achievements of the diverse elements of our economy, while making a unique place true to our vision. We can't be trapped in our own backwater, watching the struggles of the interests around us as if we were uninvolved. That's TV, and we need to think outside that box.

**WHOLE FOODS CO-OP**

MARKET • DELI • ORGANIC PRODUCE

1332 East 4th Street

Duluth MN 55805

Address Service Requested

PRSRT STD  
U.S. POSTAGE  
PAID  
DULUTH, MN  
PERMIT NO. 492

Printed with soy ink on 100% post-consumer waste recycled paper



# Garbanzo Gazette

March and April 2003

**In this issue:**

WFC's 10th Anniversary  
on 4th Street

Gazette now features fotos

Earth Day Celebration

Expansion plans update

Recipes

Lots of new products in store

Cedar Grove Cheese

Order your garden plants!