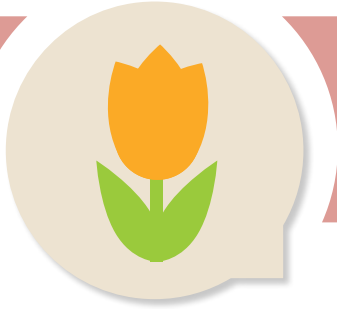




— 2015 —

Growing Guide



Flowers

ALYSSUM

Carpet of Snow

Snowy white flowers, 3 – 5" tall. Maintains its compact spreading habit all season long. Ideal for containers or beds. Annual.

Easter Bonnet Mix

A blend of unique colors. Vigorous spreading plants that can be planted in borders or hanging baskets. Plants reach about 4" tall. Richer colors are achieved if given some shade in the heat of summer. Annual.

BEGONIA

Non-Stop Mix

The classic double-blooming Begonia lives up to its name. Blooming nonstop from June to frost. The 4 – 4 ½" double flowers unfold above a dense display of deep green foliage. Great for hanging baskets or pots. Annual.

COLEUS

Rainbow Mix

Size ranges from 12 – 18". Bright-colored mixture of medium-sized leaf varieties. Vigorous grower with heart-shaped leaves ideal for containers and borders. Can also be kept indoors as a houseplant. Annual.

Wizard Mix

Wizard Coleus are 10" tall, a base branching version of Rainbow. Compact and bushy, they need no pinching and resist flowering. Ideal for containers and borders. Can also be kept indoors as a houseplant. Annual.

COSMOS

Sensation Mix

2 – 5' plants. Large-flowered cosmos need little tending and will withstand the first mild frosts of fall. Great cut flower for bouquets.

Sonata Mix

Showy flowers are single with a mix of white and shades of pink. 20 – 25" tall and wind tolerant. Flowers are 2 ½".

DIANTHUS

Raspberry Parfait

Striking raspberry red and light pink flowers which resemble small bullseyes. Grows well in pots or beds. A compact growth habit. Perennial in zones 3 – 9.

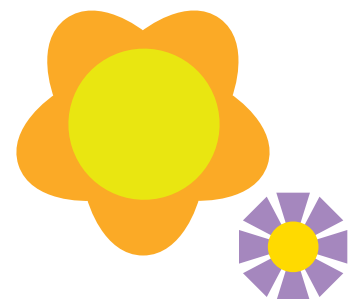
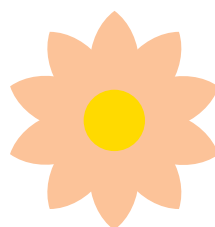
Wee Willie Mix

Dwarf form of the common Sweet William, 3 – 6" tall. A compact form and free blooming habit makes it a perfect filler for instant color in the garden. Blooms in 6 – 8 weeks from seed. Very easy to grow. Annual.

DIGITALIS

Camelot Mix

Digitalis (commonly called foxglove) can reach heights of 3' with beautiful flowers of cream, lavender, rose and white. Likes a rich moist soil. Perfect for an open woodland garden or flower bed. Can be planted as an annual in our area or Biannual in zones 4 – 8.



FUCHSIAS

Enjoy blooms from late spring through fall. Colorful flowers attract butterflies and hummingbirds. Fuchsias make an easy indoor plant if you can provide the bright filtered light they need to grow. Moving your plant outdoors for the summer will help it thrive. Fuchsias are not frost tolerant. Bring inside when the temperature drops below 45° F at night.

Pinch off growing tips to encourage the plant branch out. You can propagate stem tips if you want for more plants. Fuchsias prefer partial shade and should never dry out.

Angel Earrings

Very heat tolerant but needs shade, vigorous, no pruning necessary. Compact with continuous blooming and growth habits between varieties from trailing to upright. Ideal in hanging baskets, potted containers, window boxes, but very adaptable as bedding plants in landscaping as well.

Bella Rosella

Large double flowers with light pink sepals and dark pink corollas. Bella Rosella is a trailing variety, perfect for hanging baskets.

Dark Eyes

Upright in form with a bushy branching habit. The leaves are mid-green. Flowers are medium sized, double pendants with tubes and upturned sepals that are deep red with deep violet-blue corollas. This shrub grows to a height of 2' tall x 2 ½' wide.

New Millennium

The large double flowers in deep pink and black measure approximately 3" wide. Ideal for growing in pots on your patio, or in window-boxes, or hanging planters. Great for garden borders as well. Semi-trailing variety.

Marinka

Excellent in hanging baskets and containers. Produces masses of bright red flowers over a long period from summer to the first frosts in fall.

Swingtime

Red and white trailing variety with large, lush flowers. Average 12" height and 24" spread. Great for general garden use, container planting, and hanging baskets.

GERANIUMS

Deep Red

Strong Geranium fragrance. Blooms in flushes throughout the season. Excellent in containers. Height of 30" – 4', width of up to 4'.

Rose Bi-color

Plants are very uniform; flower stems are short and well-branched. Free flowering with large, 4 – 5" round flowers that start out white then deepen to rose-pink as flowers mature.

Salmon

A dark salmon flower on plants with medium green leaves and dark zoning. Good heat tolerance. Wonderful in containers. Dead-heading is necessary, make sure you break dead blooms off from the base of the stalk.

SCENTED GERANIUMS

Easy-to-grow scented Geraniums are low-maintenance plants. Tender perennial that can be brought indoors for winter as houseplants. Prefers well-drained soil with ample organic matter. Full sun.

Altar of Roses

Palmate leaves, small pink flowers in summer. Strong rose scent, useful in flavoring jelly. Vigorous upright plants to 2 or more feet in a single season.

Angels Perfume

Stunning variety delivers the best of both worlds: a gorgeous show of beautiful burgundy blooms and a lavish commotion of ruffled, lemon-scented, cool-green foliage. Grows quickly to 12 – 14". Shade to full sun.

Lady Plymouth

An old favourite grown for its foliage as much as its lavender-pink flowers. Clear citrus aroma. Average of 18" height and 12" spread.

Orange Fizz

Short growing habit with shaggy orange scented leaves.

IMPATIENS

Accent Mix

Perfect for baskets, containers or landscaping. Low maintenance for shade to semi-shade. Annual with a height of 10 – 12" and a width of 10 – 12" with a mounding habit.

Super Elfin Mix

Perfect for baskets, containers or landscaping. Free branching from 8 – 10" tall. The earliest flowering with masses of blooms. Thrive in shade and require little care. Annual.

LOBELIA

Crystal Palace

Intense, deep blue flowers set off by dark bronze foliage on extremely compact plants. Excellent for edgings or borders, 4 – 6" tall, upright.

Sapphire Trailing

Trailing Lobelia, blue with a white eye. Great for baskets or to trail over the edge of a pot.

MARIGOLDS

Bonanza

Plants reach 8 – 12" in height with an equal spread. Their lacy, dark green leaves provide a contrasting background to the 1½ – 2" blooms. Flowers are rounded, carnation-like pom-poms that bloom all summer. These strongly fragrant blooms come in a variety of colors including bright yellow, orange, red with an orange center and a variegated yellow and reddish-orange.

Lemondrop

Large yellow, fully double crested blooms. Dwarf, bushy plants 8 – 9". Spent flowers are unsightly and require periodic removal to keep the plants looking fresh. Repel deer but attract butterflies and hummingbirds.

MOSS ROSE

Sundial

Moss Rose is the gardener's choice for the hottest, driest, most problematic spots in the garden. This succulent plant thrives in heat, drought, and lousy soil, rewarding gardeners with nonstop color. The sundial variety produces giant semi-double flowers that stay open longer into the day.

NICOTIANA

Domino Hybrid Mix

14" tall compact plants with lots of flowers that fill summer afternoons and evenings with an intoxicating perfume. Performs well in full sun or shade. Perfect for floral arrangements. Attracts butterflies, hummingbirds and spectacular moths. Deer and rabbit resistant.

PANSIES

Delta Blotch Mix

Delta series pansies show good heat tolerance but also bloom continuously under low light. Extremely uniform in timing and habit. Annual.

Ice Cream Mix

A mix of vanilla and cherry color, including shades of raspberry, peach and the occasional apricot. Vibrant blooms are mostly picotee-edged. Full to part sun. Annual.

Frizzle Sizzle Mix

Offers unique and bold colors. The frilly flower makes this Pansy a standout. Stronger ruffling occurs in cool conditions; spring production is recommended. Some blooms have attractive whiskers. Well-suited to planters, bowls and baskets. Annual.

Majestic Giants Mix

This is one of Barb's many favorite pansies. Extra large flowers about 4" across with traditional dark blotched faces. Very vigorous and cold resistant. These sometimes make it through the winter and surprise you in the spring by blooming.

PANSIES *(continued)*

Nature Mulberry Shades

A great new color! Nature series has the free-flowering ability of Violas and the flower size of Pansies. It is highly recommended for spring plantings, fall beds and containers. Can be started indoors. Prefers cool weather to bloom. Partial to full sun. Can over-winter in cold zones if mulched. 6" tall.

PETUNIAS

Celebrity Blue Floribunda

Bears single, medium-sized, funnel-shaped flowers which are deep blue in color. Like favorite guests, Celebrity Petunias come early and stay late! 3 ½" blooms begin early and just keep coming for an especially long season. Great resistance to adverse weather, from rain and humidity to warm night. Plants reach 8 – 10" tall, but begin blooming at just 4". They bring in the butterflies with their clear, glowing blooms, and are quite low-maintenance. Very impressive, carefree performers.

Celebrity Burgundy Floribunda

Bears single, medium-sized, funnel-shaped flowers which are deep burgundy red in color. They have a grandiflora flower size with and the weather tolerance of a multiflora. 3 ½" flowers bloom early on compact plants reaching 8 – 10" at full bloom. Thrives in humid, rainy conditions.

Celebrity Burgundy Frost Floribunda

Bears single, medium-sized, funnel-shaped flowers which are deep burgundy red with a large white picotte edge and a lighter veined throat. It has a mounding to spreading form. Branches and flowers freely and holds up to heat, humidity and rain. 3 ½" flowers bloom early on compact plants reaching 8 – 10" at full bloom.

Celebrity Chiffon Morn Floribunda

The petals are pastel-pink with a bright white throat, creating a neat, fresh appearance. The plants eventually reach 8 – 10" high, making them a great size for both garden and container. Very impressive, carefree performers.

PETUNIAS *(continued)*

Celebrity Red Floribunda

Bears single, medium-sized, funnel-shaped flowers which are bright red in color. They have a grandiflora flower size with the unsurpassed garden performance of multifloras. 3 ½" flowers bloom early on compact plants reaching 8 – 10" at full bloom. Thrives in humid, rainy conditions.

Celebrity White Floribunda

Bears single, medium-sized, funnel-shaped flowers which are bright white in color. They have a grandiflora flower size with the unsurpassed garden performance of multifloras. 3 ½" flowers bloom early on compact plants reaching 8 – 10" at full bloom. Thrives in humid, rainy conditions.

Celebrity Neon Floribunda

Feature a mounding to spreading form, good branching and are free flowering. The typically abundant blooms hold up to heat, humidity and rain. Bears single, medium-sized, funnel-shaped flowers which are bright electric magenta-hot pink with a white throat. This Petunia is a great choice for beds, hanging baskets, window boxes and tubs.

Daddy Mix

Large, grandiflora-type blooms with wavy margins. Come in many brilliant colors, including blue, plum purple, pink, and orchid. The compact, spreading plants become covered with large blooms for an extended period of time in summer, and unlike many other grandiflora types, the flowers hold up to rain. Medium to fine oval, green leaves. Stems are fuzzy, sticky to the touch and strongly scented.



WAVE PETUNIAS

Wave Petunia Blue

Rich, intense blue in color. Growing only 6" tall, the plants spread 4' wide or more and are continuously covered with masses of 3" flowers. Their exceptional weather tolerance makes them ideal for cascading over banks and hanging baskets.

Wave Petunia Purple

The first of the ground-hugging or "prostrate" petunias grown from seed. Plants will spread from 2 – 4' and reach no more than 6" in height, with incredible weather tolerance and blooming power. Bright purple 3" flowers blooming into fall.

PHLOX

Grandilora Choice Mix

A mixture of solid and bicolors in every hue from white to vivid red, and including shades of pink and orange. A fragrant, hardy, colorful mixture of easy-to-grow, easy-to-care-for blooms. Great for bouquets. Annual.

SNAPDRAGONS

Rocket Mix

Resistant to heat, tall, multiple spikes, strong and consistent, dead-head for more blooms. 30 – 36" tall. It is a great cut flower. Survives light frost in the fall.

SUNFLOWERS

Autumn Beauty

Beautiful flowers up to 8" across. Bright yellow, bronze and purple shades with some bi-colors. Multi-branching producing many long stems, 5' tall.

Teddy Bear

Lots of golden yellow, multi-petal Chrysanthemum-type blooms. Dwarf sturdy plants are upright, growing about 3' tall.

VIOLAS

Johnny-Jump-Up

Delicately fragrant flowers are edible and make delightful garnishes. Very winter hardy and eager to self-sow in the shade of summer plants, Violas are cheerful surprises in the cool months. Johnny-Jump Up is tricolored in bright purple, yellow and white. Violas will rebloom in fall if cut back in the heat of summer.

Penny All Season Mix

A mixture of blue, deep-blue, orange, yellow and yellow-frost. The Penny series boasts the vigor growers have now come to expect from hybrid Violas. Larger than normal blooms over lush green, compact foliage.

ZINNIAS

Benary's Giant Mix

This series of giant dahlia-flowered Zinnias produces long, thick stems that are less likely (than other Zinnias) to bend when being cut. The 3 – 4" flowers are produced in clear, bright uniform colors. Greater tolerance to diseases than other cut flower Zinnias and longer vase life. Height of 30" with 12 – 16" spread. Annual.

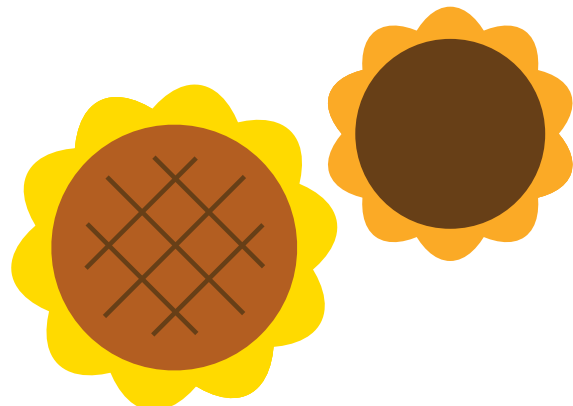
State Fair

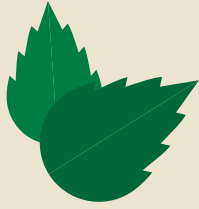
Old Fashioned variety with huge double and single blooms on 30" plants.

ANISE HYSSOP

Common

Nectar for bees, strongly anise-scented, great for tea or seasoning. Has medical uses. Flowers can be dried. Perennial. Sun, 24 – 30" tall.





Herbs

BASIL

Genovese

Also known as Sweet Basil, it is a must for pesto and tomato sandwiches. Likes warm weather. Has a heady, spicy fragrance and taste. Full sun. 24 – 30" tall.

Red Rubin

The perfect combination of ornamental appeal and intense, spicy flavor. The leaves are smooth, flat, and large, about 3 – 4" long and borne very profusely on dense, full compact plants that grow to 1' tall and 8 – 10" wide. Full sun.

Holy or Sacred

A sacred herb to Hindus. Slender hairy stems and a purple flower. Uses are teas and medicinal. The scent is musky with a hint of mint and cloves. Great fragrance. Full sun. 6" tall.

Sweet Dani

A vigorous, large-leaved green basil with a strong, fresh lemon scent. Very high in citral and essential oil, these 18 – 24" plants provide lots of leaves. Plant in full sun and harvest often to keep from going to flower.

Thai

Sweet anise-like fragrance with a hint of mint and citrus. 1 ½ – 2 ½" leaves are green at base of the plant and grow purple towards the flowers. 16 – 20" tall. Full sun.

BORAGE

Common

Easy to grow, 18 – 30" tall, has tiny blue and pink flowers for garnishes and salads, and iced Borage tea. Bees love it. Sometimes perennial. Sun.

CALENDULA

Pacific Beauty

Prefers sun, 18 – 20" tall. Classic lovely yellow and orange mix. Herbalists highly regard its healing gifts. Long blooming season.

CATNIP

Common

Cats and bees love this herb but it has lots of human uses. Green leaves are good for tea. Both the soft lavender-blue flowers and the green foliage are aromatic on these 18 – 36" tall plants. Plant in full sun. Perennial.

CHAMOMILE

German Bodegold

An improved strain of German Chamomile with a high essential oil content. White blossoms with yellow centers that are sweet and easy to pick. A summer blooming annual that grows to 2' tall. Prefers sun.

CHIVES

Garden

Heaviest leaf, great for freezing, drying or immediate use. Pink-purple blossoms. Prefers sun to part shade, 12" high. Perennial.

Garlic Flat Leaf

Flavor is a combination of garlic and chives. White flowers. Prefers sun. 15 – 18" tall. Perennial.

CILANTRO

Caribe

Produces dense bunches of aromatic dark green leaves in generous quantities. Plant in full sun. 12 – 24" tall.

DILL

Bouquet

Use as Dill weed or use the mature seed stock for pickles. High yielding with heavier foliage. Reaches 12 – 24" tall. Plant in full sun.

Fern Leafed

Dwarf variety with high leaf yields. Very slow to bolt. Abundant, dark blue-green foliage. Great in containers or in small spaces. Prefers sun. Plant height varies.

ECHINACEA

Purple Coneflower Common

Easiest to grow. Sun or light shade. Reaches 24 – 30" tall. Perennial.

EUCALYPTUS

Silver Dollar

Large, silvery blue-green leaves appear to be strung on the stem. Popular foliage for fresh, dried, or preserved use. Annual in our area.

Silver Drop

Small, silver-green leaves on well-branched stems are ideal for fresh or dried bouquets. Easily preserved with glycerin. Annual in our area.

FENNEL

Bronze Leaf

Sun. Grows 24 – 36" tall. Foliage resembles Dill. Annual in our area.

FEVERFEW

Common

Pungent, aromatic perennial self-seeds easily in areas where it doesn't winter over. Long history of using leaves for fevers, menstrual cramps, and migraines. Sun/part shade. 24 – 36" tall.

LAVENDER

Munstead

Compact strain of English lavender. Plant in full sun. Height of 12 – 18" with blue-violet flowers. A tender perennial here, depending on your location.

LEMON BALM

Common

Sun, 18 – 26" tall, can be perennial with care. Great lemon scent, one of Barb's favorite herbs. *Mother Earth Living Herb of the Year* in 2007.

LEMON GRASS

East Indian

Easy to grow. Leaves can be used for tea and cooking. Used medicinally to treat digestive problems, fever, and as an anti-inflammatory aid. Tender perennial. Sun. 18 – 48" tall.

LOVAGE

Herbaceous, perennial plant growing to 6 – 8" tall, with a basal rosette of leaves and stems with further leaves, the flowers being produced in umbels at the top of the stems. The stems and leaves are shiny glabrous green to yellow-green and smell of lime when crushed.

LEMON VERBENA

Well-known for culinary and medicinal use. Shiny green, pointed leaves with lemon flavor and aroma. Excellent for culinary use and herbal remedies. White flowers. Pinch to encourage branching. Plants can be grown in containers in northern areas and brought inside to over-winter.

MARJORAM

Sweet

Flavor similar to Oregano but sweeter and milder. Annual in our area, can be brought indoors for a kitchen plant. Sun. 8 – 24" tall.

MINT

Chocolate Mint

Chocolate Mint leaves have a delightful minty chocolate flavor, much like the classic Girl Scout cookie. Grows 24" tall, 18 – 24 inches wide. Prefers moist soil and partial shade.

Common

Mint is an easy-to-grow perennial herb primarily used for flavorings and garnishes. Sun to part shade, 18 – 36" tall, perennial, zone 4. Thrives in containers, and spreads readily in the garden.

Spearmint

Mint is an easy-to-grow perennial herb primarily used for flavorings and garnishes. Sun to part shade, 18 – 36" tall, perennial, zone 4. Thrives in containers, and spreads readily in the garden.

NASTURTIUM

Jewel Mix

Variety of colors ranging in the yellow-orange. Great for flavoring butters, cream cheese, etc. Peppery foliage with spicy blossoms. Compact. Sun/part shade. Plant height varies.

OREGANO

Greek

Great for pizza and Italian cooking. Plant in full sun. 8 – 18" tall. White flowers. Perennial.

PARSLEY

Curly Forest Green Moss

Long, stiff, upright stems help keep the double and triple curled leaves clean and allow for easy bunching. Good flavor, yield and appearance. Annual. Prefers Sun. Plant height varies.

Italian Giant of Italy

Huge dark green, leaves and great flavor. Strong upright stems and high yielding. Adds true European character to soups and stews. Annual. Prefers Sun. Plant height varies.

ROSEMARY

Pine-scented, versatile flavoring for meats and veggies. Likes the sun. Height varies in our climate. Can sometimes be wintered indoors.



SAGE

Common

Grey-green leaves, good for dressings, sausage, teas and herbal wreaths. Plant in sun to part shade. Reaches 16" tall in our area.

White

Aromatic incense herb used to make the smudge sticks common in Native American ceremonies. Bushy plants with thick stems and dusty gray-green foliage. Good for bee and wildlife forage. Used medicinally for skin washes and as a natural deodorant. Mild tea is used as a general tonic. Annual in our area. Prefers sun. 16 – 36"

SAVORY

Summer

Grows about 10 – 18" tall. The standard Savory with long internodes on a tall, somewhat lanky plant. A flavoring for bean, cabbage, fish and many other foods. Also used for medicinal purposes. Annual. Prefers sun.

Winter

6 – 12" tall. Perennial cousin of Summer Savory. The leaves are thicker and shinier than Summer Savory. Flavor is more pungent and biting and has a higher proportion of thymol than Summer Savory. Prefers sun.

TARRAGON

Great in French and Italian recipes, beans and soups. Use fresh or dry. Good base in herbal wreaths. Often will winter over, depending on harshness of weather and cover. Bees love this staple herb. Prefers sun/part shade. 6 – 12".

THYME

English

Great in French and Italian recipes, beans and soups. Use fresh or dry. Good base in herbal wreaths. Often will winter over, depending on harshness of weather and cover. Bees love this staple herb. Prefers sun/part shade. 6 – 12".

Creeping

Sturdy aromatic ground cover. Slender, creeping stems and round leaves. Can withstand light foot traffic and gives off a pleasant aroma when walked upon. Drought tolerant when established. Prefers sun/part shade. 6 – 12".





Peppers

BELL PEPPERS

Ace

50 day (green), 70 day (red)

Amazing yields of medium-sized 3 – 4 lobed, sweet bell peppers. Nearly every flower produces a pepper. Apparent resistance to blossom drop even in adverse weather. Glossy green fruits turn red early.

King of the North

50 day (green), 70 day (red)

One of the best bell peppers for our Northern climate, where the seasons are cool and short. Blocky, uniform fruits are excellent for stuffing or fresh eating. Great sweet flavor. Green fruits turn red when left on the vine to maturity.

HOT PEPPERS

Cayenne Long Red Narrow

65 day

Tapered, thin-walled, narrow, 5 – 6" long fruits. Peppers dry quickly to a bright crimson red. Early, high yielding.

Habañero

90 day

Not for the faint of heart. Put in the hottest part of your garden or plant in greenhouse conditions. Not a heavy producer but you only need a few. One of the most fiery peppers in cultivation.

Hungarian Hot Wax

58 day

Pale yellow hot pepper with 5 ½ x 1 ½" smooth, waxy fruits tapering to a point. Easy to stuff and to peel after roasting. Ripens to orange and then to red. Great for pickling. Dependable and productive.

Jalapeño Early

71 day

Green, Heavy-yielding 3 – 3 ½" blunt end fruit can be eaten green dark green or allowed to ripen to red. Delicious, distinctive jalapeño flavor.

HOT PEPPERS *(continued)*

Poblano/Ancho

68 day (green), 88 day (red)

Heart-shaped, thinner-walled fruits are moderately pungent and turn from black-green to red. Great for fire-roasting.

SWEET PEPPERS

Anaheim Joe E. Parker

70 day

A Southwestern style traditional Anaheim chili pepper. Usually harvested green and used for stuffing, grilling, roasting or processing. Has a thick, crisp flesh with mild heat and excellent flavor.

Banana Sweet

68 day

A yellow, elongated, 6" long pepper that turns scarlet when fully ripe but stays sweet and mild. Delightful in salads, pickled, or eaten raw. Famous for its amazing yields. Beautiful pepper.

Carmen

70 day

A 2006 All American Selections Winner. Firm, tapered fruits growing to about 6" long x 2 ½" wide at shoulders, maturing green to red on upright, leafy plants. A horn-shaped Italian pepper with a noticeably sweeter flavor than other varieties.

Jimmy Nardello

76 day

Thin-walled, sweet frying pepper is usually used green in our area. The shoulder can be from ¾ – 1 ½" wide, reaching 8" long with a curving tapered point. Turns deep red when ripe with shiny wrinkled skin. Has a pleasing sweet mild flavor when eaten raw.



Tomatoes

CHERRY TOMATOES

Black Cherry

64 day

The only truly black cherry tomato, yielding an abundant crop of huge clusters of 1", round, deep purple, mahogany-brown cherry tomatoes. Fruits are irresistibly delicious with sweet, rich, complex, full tomato flavors. These are lovely when mixed with other colored cherry tomatoes in salads. Indeterminate* and open-pollinated.

Sungold

57 day

Intense fruity flavor, exceptionally sweet, bright tangerine-orange cherry tomato. Vigorous plants start yielding early and bear right through the season. The taste can't be beat. Indeterminate*.

Sweet Million

60 day

Super sweet cherry tomato. Lots of smooth, dark red, 1 – 1 1/2" fruits produced on large vigorous plants. Matures early and continues producing until frost. Indeterminate*.

Sweet Olive Grape

57 day

Sweet red grape tomato, bite-sized firm, oval-shaped grape tomatoes bursting with flavor. Strong tolerance to heat, humidity and cracking. Plants are manageable without pruning but staking is recommended. Determinate*.

PASTE TOMATOES

Italian Black Plum

70 – 80 day

Heirloom paste tomato with elongated deep mahogany brown fruit with a touch of green on the stem end. Black color develops best in hot day weather. The flavor is rich, complex and full-bodied. Perfect for sauce, drying or eating out of hand. Indeterminate*.

Principe Borghese

70 – 75 day

The Italian heirloom that is famous for sun drying. Small, 1 – 2 oz. grape-shaped fruit; very dry with few seeds. Rich taste is wonderful for sauces. Yields clusters of fruit in abundance. Determinate*.

Roma

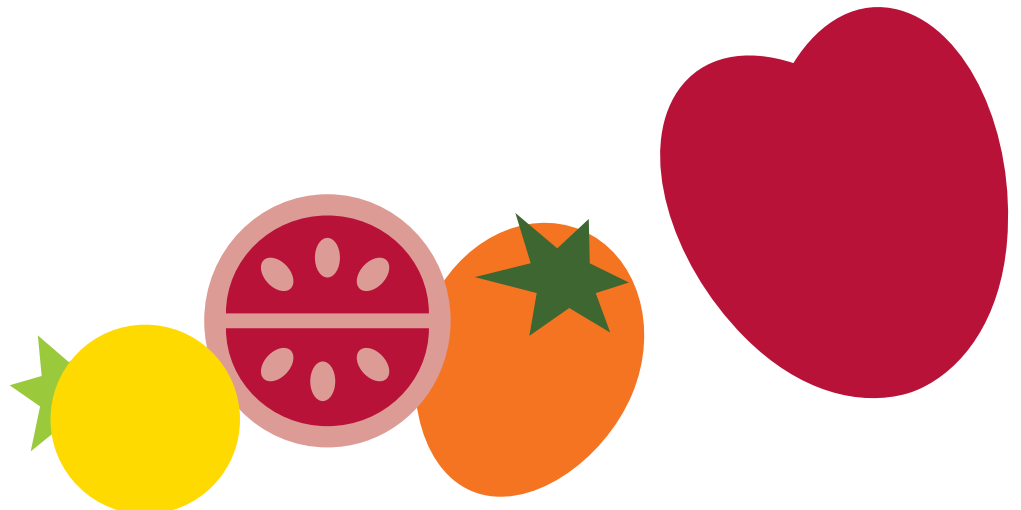
65 day

A highly popular paste tomato with great disease resistance. Plants are vigorous and strong, producing heavy yields of thick-walled fruit of deep red color and mild flavor. Determinate*.

Olpaka

82 day

A highly popular paste tomato with great disease resistance. Plants are vigorous and strong, producing heavy yields of thick-walled fruit of deep red color and mild flavor. Determinate*.



SLICERS

Box Car Willie

80 day

A multi-use heirloom tomato. The fruits are red-orange, heavy yielding, smooth, averaging 10 – 16 oz. Crack free and disease resistant. Barb always plants these. Indeterminate*

Cherokee Purple

80 day

Heirloom from Tennessee cultivated by Native American Cherokee tribe. Very productive plants producing loads of dusky rose to purple colored, 12 – 16 oz., Beefsteak tomatoes with deep red colors to the interior flesh and dark shoulders. One of the best tasting heirloom tomatoes. Indeterminate*.

Costoluto Genovese

80 day

An old Italian variety. Produces 5 oz., bright red flattened globes with heavily scalloped edges. Fruit shape is variable from nearly smooth to heavily scalloped and convoluted. Fruits are soft in texture, juicy and slightly tart in flavor. Quite unusual with great flavor. Determinate*.

Delicious

77 day

And it is delicious. A refined selection of a Beefsteak, with most fruits over 1 lb. and many larger. Smooth, solid fruits, seldom cracking with excellent flavor, excellent slicer. A Guinness World Record holder at over 7 lbs. (but don't expect that in our Northern climate). Indeterminate*.

German Johnson

75 day

Excellent flavor. Deep pink tomatoes are earlier, more uniform, and slightly smaller than Brandywine at 8 – 16 oz. Fruits have lots of deep, acidic tomato flavor and a rich, creamy texture. Indeterminate*.

Green Zebra

72 day

Delicious, almost-heirloom tomato with a tangy flavor. Ripe just as the green fruit develops a yellow blush. The fruits are 3 – 4 oz. perfect for fresh eating or in a salad. Indeterminate*.

SLICERS (continued)

Indigo Rose

60 day

These dark tomatoes are exceptionally high in antioxidants. Green when unripe, purple-red when ripe, the 1 – 2 oz., cocktail-sized tomatoes have a flavor with 'plummy' overtones. Developed by Jim Myers at Oregon State University. Moderately vigorous. Compact. Indeterminate*.

Jet Star

72 day

Jet Star has been around for a very long time. Year after year this early full-sized tomato has been rated best in trial at Highmoor Farm. Ripens prolific quantities of cosmetically perfect 7 – 8 oz. tomatoes with outstanding flavor. The smooth firm fruits almost never scar or crack and have excellent interior and exterior color. Indeterminate*.

Oregon Spring

58 day

Matures good sized fruit in August, actually performing best during cool summers. Bears some almost seedless fruits, up to 4" but somewhat variable. Tastes unusually good for such an early variety. Bred and developed from Russian parents by Dr. James R. Baggett of Oregon State University. Potato-leaf foliage. Open-pollinated. Determinate*.

Polar Beauty

63 day

Plant produces good yields of medium size red tomatoes. This early producing variety was developed in Alaska for colder climates. It has good tomato flavor. Determinate*.

Prudens Purple

67 day

Early Brandywine type. Large to very large (up to 16 oz.). Fruits are flattened and smooth with some shoulder ribbing on a few. Resists cracking and has vivid dark pink skin with crimson flesh. Medium tall, potato leaf plants. Heirloom. Indeterminate*.

SLICERS *(continued)*

Taxi

64 day

Yellow tomato, early and prolific. Meaty, 4 – 6 oz., baseball-sized, lemon yellow tomatoes. Smooth, blemish-free globes with a small stem scar. Great, sweet-flavored and easy to grow. Concentrated early set on compact vines. Adored by its fans. Determinate*.

Wayahead

63 day

“Way ahead” when it comes to early ripening. Fruits are good size, bright red, almost round and very smooth. The flesh is solid with true tomato flavor. One of the finest for juice. Our strain of this tomato has all been grown from single plant selections. Determinate*.

Wisconsin 55

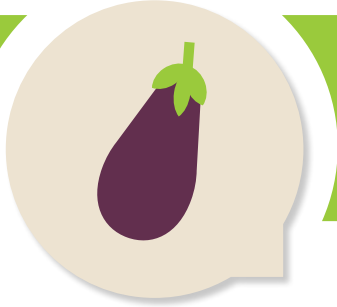
65 – 70 day

A large red slicer developed at the University of Wisconsin in the late 1950's. One of the last improved open-pollinated varieties before hybrids began to dominate the market. 6 – 8 oz., and crack-resistant with outstanding flavor. Indeterminate*.

* **DETERMINATE:** (bush) varieties do not need pruning and may be grown with or without support; fruit ripens within a concentrated time period.

* **INDETERMINATE:** (climbing) varieties should be staked, trellised, or caged, and pruned for best results; fruit ripens over an extended period.





Vegetables

BROCCOLI

Tendergreen

67 day

A 6 – 7" semi-domed head. The medium-large beads do a good job of shedding water. Pleasing blue-green color. No side shoot production.

Solstice

80 – 90 day

Open-pollinated. Produces many harvests of smaller florets rather than one large head. The plant has a beautiful blue-green color, due to the waxy coating which seems to give it great resistance to wet conditions, rots, molds, and freezing.

BRUSSELS SPROUTS

Roodnerf

96 day

Open-pollinated. Very hardy and improved flavor by frost. Vigorous plants with plump green sprouts along the stems. Purple stems along axils lend a decorative touch.

CABBAGE

Late Flat Dutch

60 – 100 day

God keeper, standard late season variety. Heads form up to 12" and weigh as much as 12 lbs. Keeps very well for processing. Heirloom.

Green Stonehead

50 day

Stonehead was an All-American Selections winner in 1969. This plant produces a solid head of cabbage and does not split in the garden. Weighing in at 4 – 6 lbs. and can be planted close together as it is quite compact. Hybrid.

CABBAGE (continued)

Red Perfection

80 day

Dense 3 – 4 lb. heads with uniform high-round shape and good wrapper leaves. Good field-holding ability. Matures just in time for late summer crops or fall harvest for medium-term storage.

Savoy Melissa

85 day

The 2 – 4 lb. solid heads are slightly flattened. Light green surrounded with dark blue-green waxy wrapper leaves. A vigorous grower even in cold wet conditions. Flavor improves with cold weather and is adapted to close spacing.

CAULIFLOWER

Snow Crown

50 – 60 day

Dependable producer of fully formed curds on 6 – 7" heads weighing 1 – 2 lbs. Always mild and sweet one of the easiest early cauliflowers to grow.

CELERY

Ventura

80 day

Open-pollinated. Ventura takes the difficulty out of growing celery. Never harsh flavor even in less than ideal conditions. Has beautiful, thick, crisp stalks.

CORN

Yellow Spring Treat

66 day

Easy to harvest. 5' plants, with 7 ½ – 8" ears. 14 – 16 rows of sweet, tender kernels. Excellent eating quality for first early. Good cool soil vigor. Earliest yellow sweet corn.

EGGPLANT

Swallow

51 day

1 ¾ x 7". If you didn't think you can grow eggplant in our cooler climate this variety will make you believe you can.

GREENS

Asian Greens Mix

28 day

Mix of two each of Mizspoon, Tatsoi and Prize Choy Pac Choi. Essential to stir-fries and many Asian cuisines, these vitamin-rich greens are easy to grow, great in salads, and easy to adapt to western cooking styles. They do well in cool weather and in cool or solar greenhouses.

Chard Bright Lights

55 day, 28 day (baby)

Lightly savoyed, green or bronze leaves with stems of many colors including gold, pink, orange, purple, red, and white with bright and pastel variations. The taste is milder than ordinary chard, with each color a bit different, an AAS winner.

Collards Champion

70 day

Rich, dark blue-green with large cabbage like leaves. Plants are non-heading, productive and hardy. Waxy leaves provide a natural protection from cabbage worms. Improved Vates type, selected to stand longer, attaining a two week advantage over other varieties.

Lettuce Mix

28 day

Mix of six different lettuce varieties. Three red varieties and three green varieties.

Kale Mix

43 Day, 25 day (baby)

A mix of two each of Red Russian, Siberian and Lacinato (Dinosaur). Kale is recognized for its exceptional nutrient richness, health benefits and delicious flavor.

GREENS (continued)

Spinach Emperor

35 day, 25 day (baby)

Semi-savory variety. Dark green elongated leaves with a semi-upright plant habit. It has a moderate growth rate and a moderate bolt tolerance. Emperor is well suited for a late fall or early spring planting.

TOMATILLO

Toma Verde

60 day

Early, green tomatillo. Large, flat-round green fruits. Use in salsa or Mexican cooking. Interesting fruit and sometimes will self seed.

ONIONS

Copra

105 – 115 day

An unequaled leader in storage varieties. Medium-sized, dark yellow skinned globe onion with a thin neck that dries quickly. Stores up to 1 year.

Red Marble

95 day

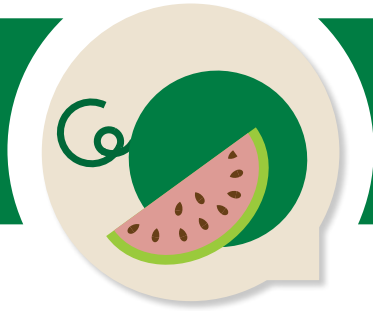
Red Marble's dark red color goes deep into the rings. Average ½ – 1 ¾" diameter by ¾ – 1" depth. Hard, good storage variety

LEEKs

Bleu de Solaize

100 – 120 day

A hard-to-find French heirloom named because its dark green leaves sometimes develop a tinge of blue during cold spells. Hardy, thick, medium-long shanks with mild flavor.



Vines

CUCUMBERS

Marketmore 76

58 day

Non-hybrid, attractive slicer. Long, slender, dark green cucumbers. Standard for North slicing cucumbers 8 – 9" fruits stay uniformly dark green even in weather stress.

National Pickling

52 day

Produces short thick cukes with blunt ends that are perfect for pickles and slicing in salads. Cucumbers average 6" and are slightly tapered to fit nicely in a pickle jar. Skin in medium green with some striping. Heavy producer, black spines. Developed by the National Pickle Packers Association.

SUMMER SQUASH

Zucchini Black

50 day

Open-pollinated, with superior flavor. Dark green not as dark as raven and easy to pick.

Zucchini Raven

48 day

Smooth-skinned, glossy, shapely green-black fruits. According to research it's dark pigmentation contains more of the antioxidant lutein than lighter-skinned varieties.

WINTER SQUASH

Acorn Table Queen

90 day

A standard Acorn variety with 1 ½ – 2 lbs. Very vigorous and prolific, can withstand poor soil condition and keeps very well. Flesh is a thick, pale orange with excellent flavor that improves in storage.

Buttercup Burgess

100 day

8" winter squash, deep green with grey turban cap. Deep orange flesh, fiberless flesh with a sweet flavor.

Butternut Whaltam

105 day

The standard Butternut. Light tan-colored winter squash with small seed cavities and thick, cylindrical necks without crooks. Uniform fruits have 9" long, averaging 4 – 5 lbs. Has sweet flavor, particularly after 2 months storage. The most widely grown full-sized Butternut. Average yield 4 – 5 fruits per plant.

Delicata Zeppelin

100 day

7 – 9" long, 3" wide 1 ½ – 2 lbs., cream-colored fruits with dark green longitudinal stripes and flecks. Unsurpassed sweet orange flesh and short vines, requiring no curing. In storage, the stripes change into a delicate orange color and the cream background yellows.

Pumpkin Autumn Gold

98 day

No green pumpkins. Immature fruits are yellow, ripening to a deep orange, ribbed with good handles. Averaging 10 – 15 lbs. medium sized.

WINTER SQUASH *(continued)*

Pumpkin Small Sugar

90 day

Standard pie pumpkin, Deep orange flesh averages 6 – 8 lbs. Stores well. Also works well as a decorative pumpkin.

Spaghetti

88 day

Skin is ivory changing to pale yellow at maturity. Oblong fruit averaging 3 – 5 lbs. Purposely stringy, mild, spaghetti flesh.

MELONS

Cantaloupe Sweet Granite

70 day

A melon that was developed specifically for Northern climates. Oblong orange-fleshed fruit with light netting and averaging about 3 lbs.

Watermelon Sugar Baby

76 day

Red flesh, round fruits 6 – 8" in diameter averaging 8 – 10 lbs. Rinds are strong, resist breakage. The standard of small watermelons.

